



## ROUTING AND RETENTION AIDS



## **PKC Group**

PKC Group is a global leader in the design, development, and production of high-quality, cost-effective wiring systems, components, and electronics for the commercial vehicle, automotive, agricultural, construction, recreational, energy, and industrial electronics industries.

### **Wiring Systems:**

From a single wire harness to an entire Electrical Distribution System (EDS), PKC delivers power where and when you need it.

System integrity is consistently achieved through architecture optimization, proven change control processes, and the vertical integration of key PKC brand components into the EDS design, including:

- **Power Distribution Centers**
- **Connector Systems**
- **Terminal Systems**
- **Routing and Retention Aids**
- **Wire and Cable**

Specializing in the design and customization of unique products with demanding requirements, PKC is capable of providing a wide range of EDS support, from full service supplier to build to print provider.

### **Electronics:**

PKC Electronics provides complete support, from design and development to production, of customized electronics.

Through operational excellence, PKC consistently reduces customer costs while extending product life cycles. With strategically placed facilities around the globe, PKC offers a wide range of customizable products and services, including:

- **Smart Power Distribution Centers**
- **Electronic Control Units**
- **DC to DC Converters**
- **Battery Management**
- **Custom Testing Aids for Electronic Devices**
- **Contract Manufacturing**

Together, PKC Wiring Systems and Electronics divisions offer a fully integrated Electrical and Electronics Distribution System (EDS) provider to our customers.

## **Routing and Retention Aids**

PKC offers a variety of effective, cost-efficient routing and retention aids for electrical distribution systems. With over 50 different part configurations, multiple interior and exterior retention options are available for sheet metal, stud, and plastic applications.

PKC Routing and Retention Aids are designed for a wide range of stud/hole sizes and material thickness combinations. Fastener fins are constructed to meet ergonomic insertion requirements while providing high retention force and reliability over multiple insertions and extractions.

All routing and retention aids are injection molded using high grade resins resistant to a wide range of chemical fluids, including: gasoline, diesel fuel, anti-freeze, motor oil, transmission fluid, brake fluid, and battery acid.

There are numerous benefits to PKC routing and retention aids:

- Multiple fastener attachment options to meet any requirements
- Simple, robust, field-proven designs
- Resistance to a variety of chemical fluids due to high-grade resin
- Reliable performance over numerous insertions and extractions
- Validated to the latest OEM and USCAR test standards
- Designed for use in a temperature range of -40°C to 135°C
- Customized design solutions available for unique customer applications



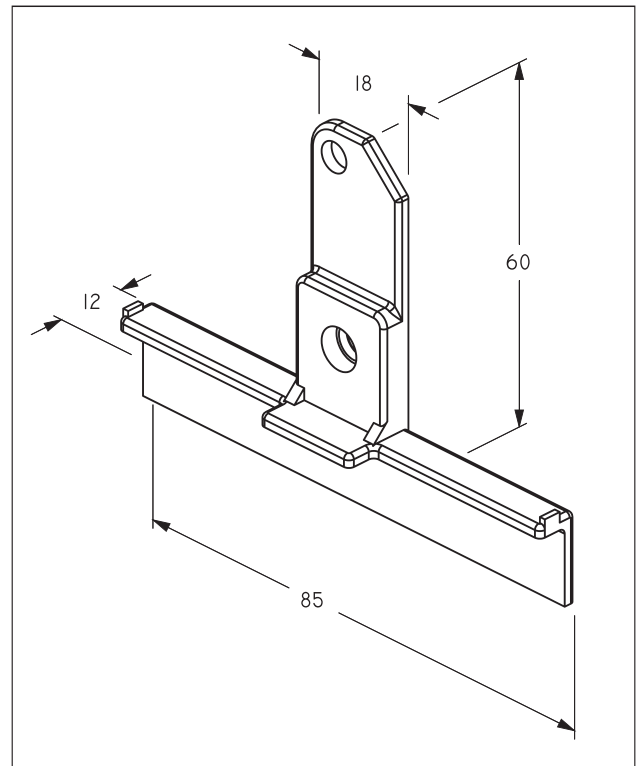
## CATALOG INDEX

Introduction	2
Overview	3
Harness Retainers	5
Connectors Retainers	31

# HARNESS ROUTING AND RETENTION AID SECTION

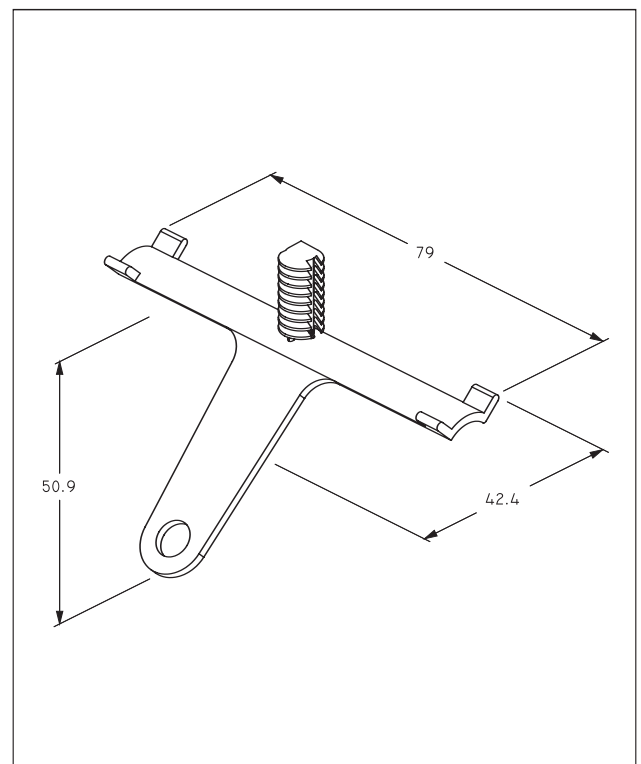


## Part Number: E-0329 - Tape-on Retainer with Portable Hole



PART FEATURE	DETAILS
Small Hole Size	5.0mm
Large Hole Size	7.0mm

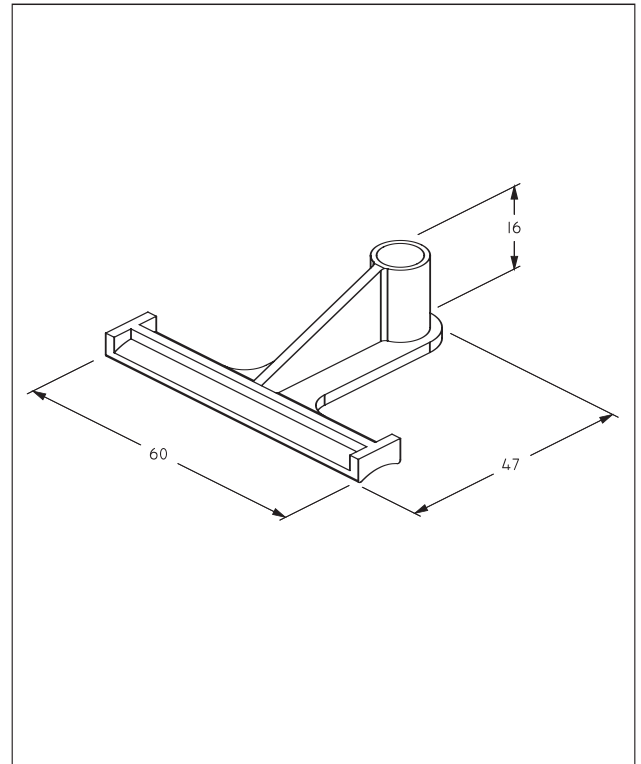
## Part Number: E-0353 - Tape-on Retainer with Portable Hole



PART FEATURE	DETAILS
Mating Hole Size	7.95mm
Maximum Panel Thickness	11.70mm

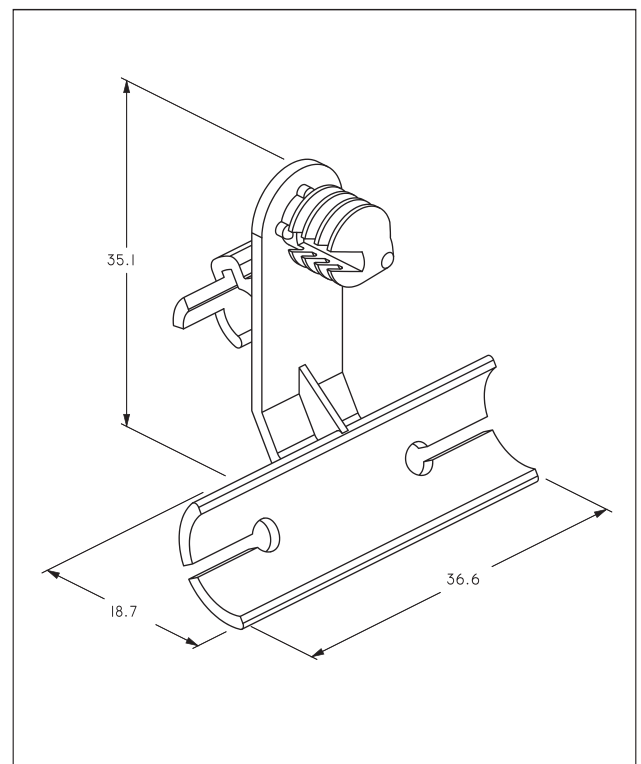


## Part Number: E-0416 - Tape-on Retainer for M6 Stud



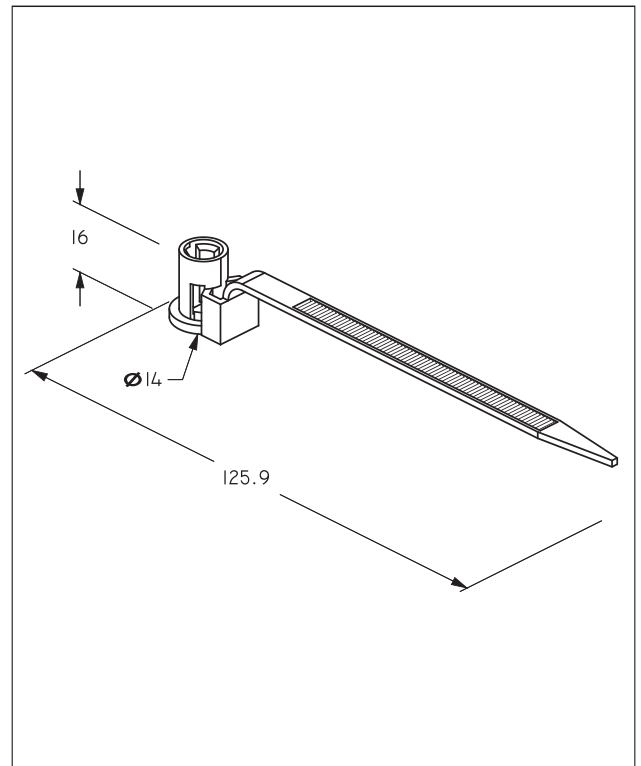
PART FEATURE	DETAILS
Mating Stud Size	M6

## Part Number: E-0455 - Reverse Tape-on Retainer with Tube Attachment



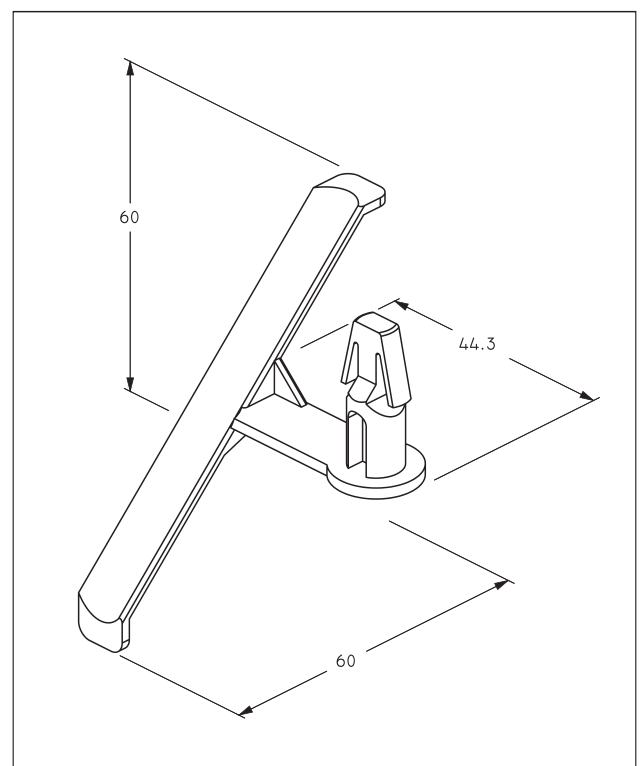
PART FEATURE	DETAILS
Mating Hole Size	7.0mm
Maximum Panel Thickness	3.16mm

## Part Number: E-0474 - Tie Strap Retainer with M6 Stud Attachment



PART FEATURE	DETAILS
Mating Stud Size	M6

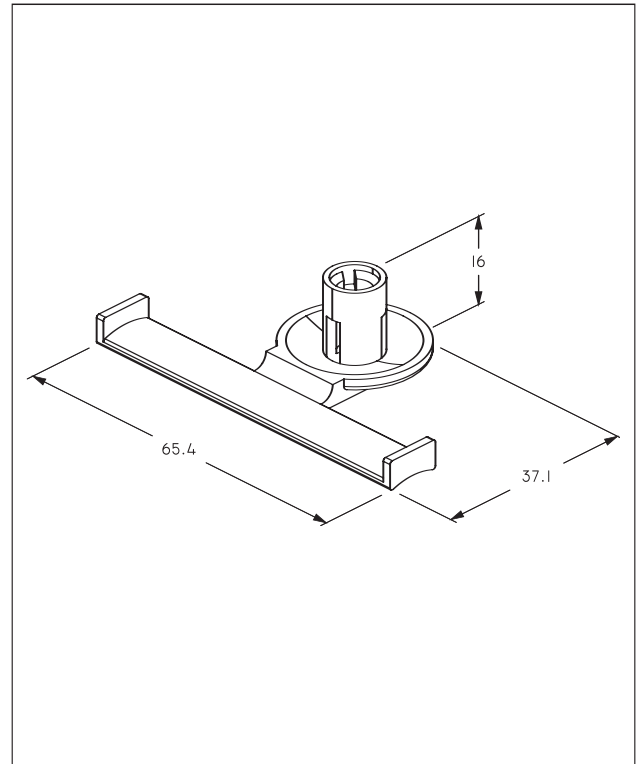
## Part Number: E-0628 - Offset Christmas Tree Tape-on Retainer



PART FEATURE	DETAILS
Mating Hole Size	9.40mm
Panel Thickness	5.1mm

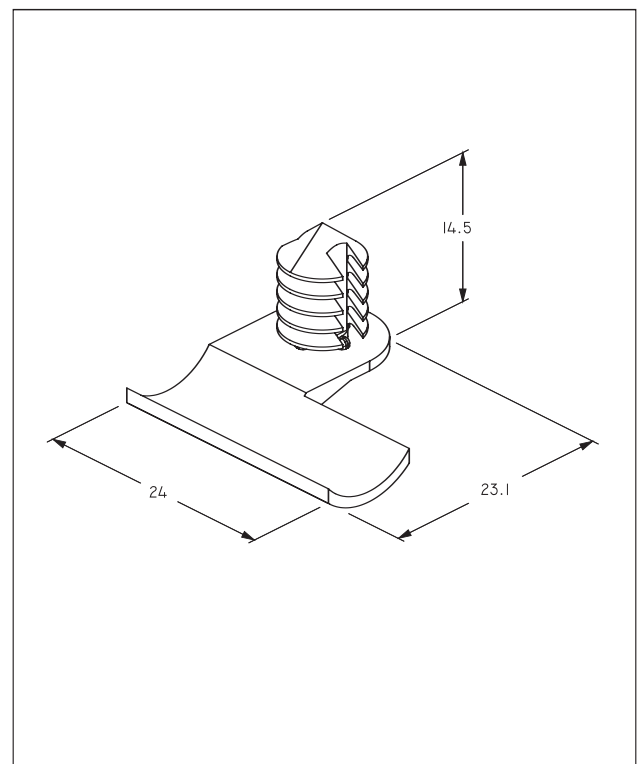


## Part Number: E-0688 - Tape-on Retainer for M6 Stud



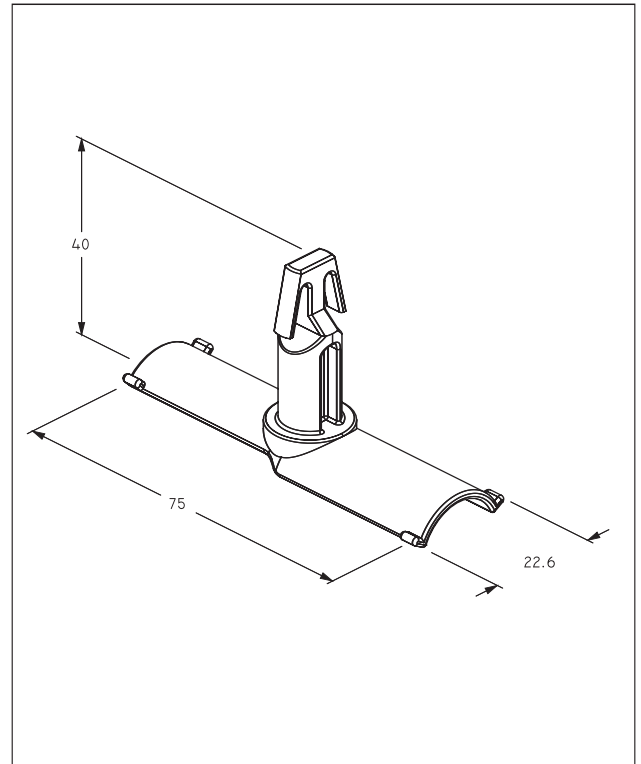
PART FEATURE	DETAILS
Mating Stud Size	M6

## Part Number: E-0991 - 1/2 Tape-on Retainer



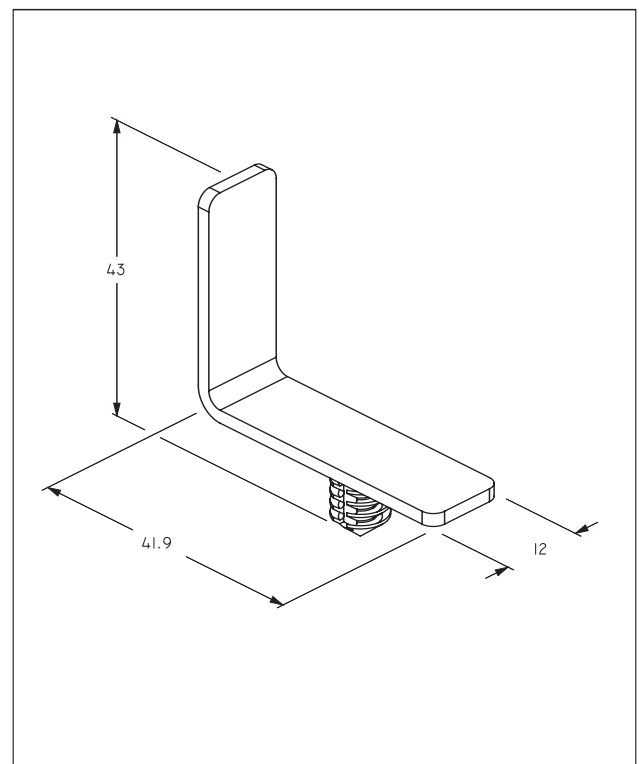
PART FEATURE	DETAILS
Mating Hole Size	6.5mm
Maximum Panel Thickness	5.10mm

## Part Number: E-1149 - Tape-on Retainer



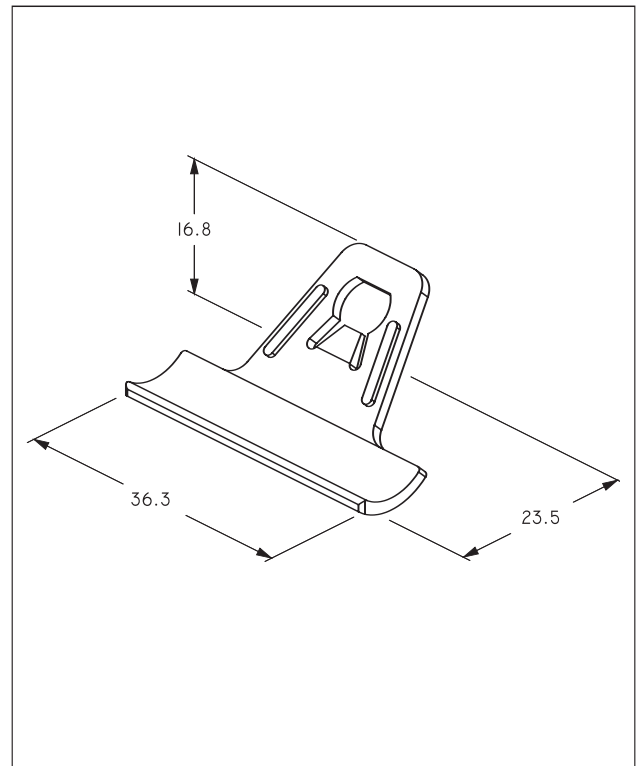
PART FEATURE	DETAILS
Mating Hole Size	12.0mm
Panel Thickness	18.5mm

## Part Number: E-1302 - 90° Harness Guide Retainer



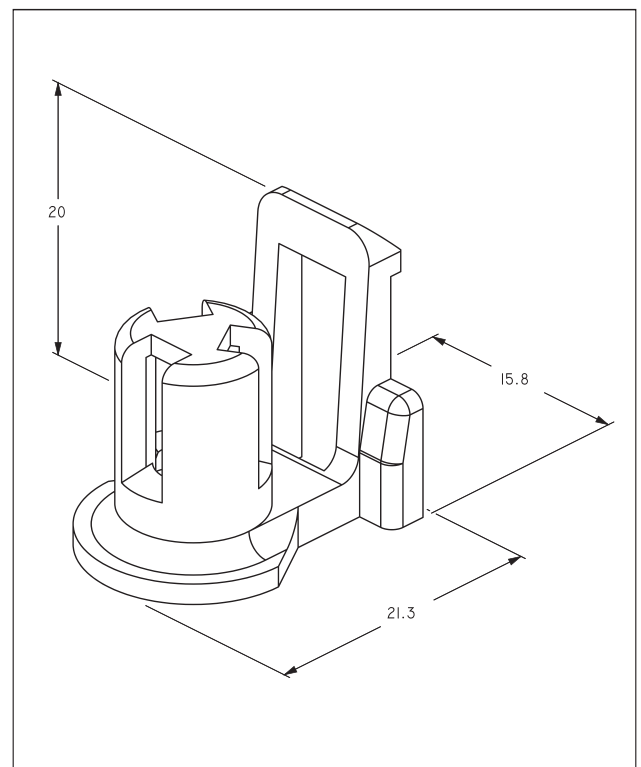
PART FEATURE	DETAILS
Mating Hole Size	6.5mm
Maximum Panel Thickness	5.10mm

## Part Number: E-1303 - Tape-on Retainer with Portable Hole



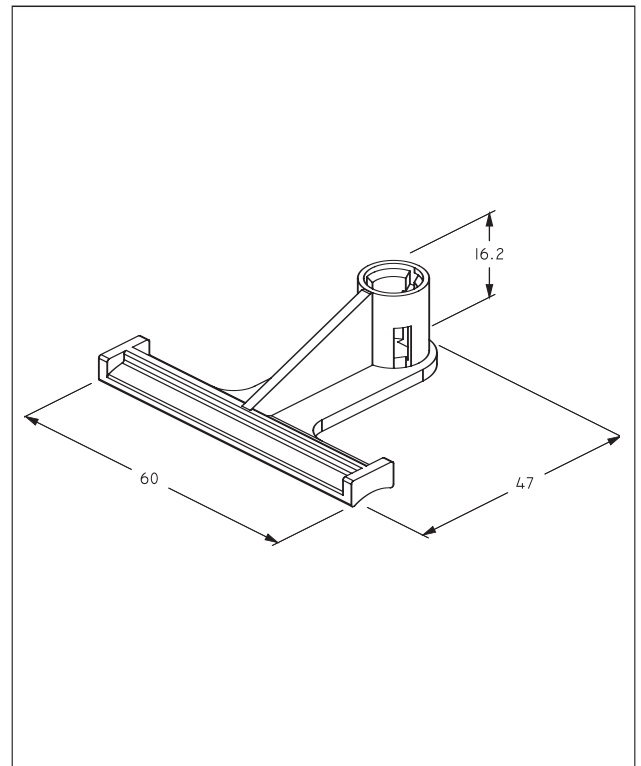
PART FEATURE	DETAILS
Mating Stud Size	M6

## Part Number: E-1320 - Retainer with M6 Stud Attachment



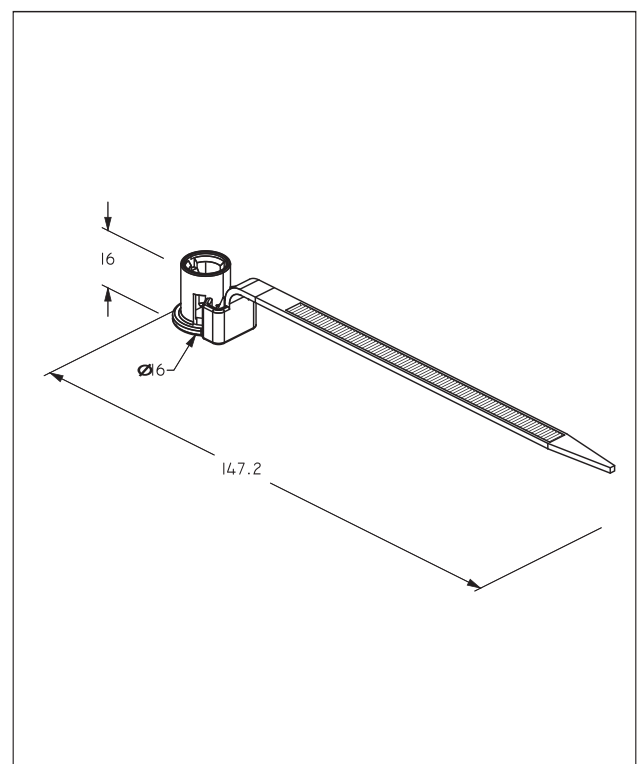
PART FEATURE	DETAILS
Mating Stud Size	M6

## Part Number: E-1434 - Tape-on Retainer with M8 Stud Attachment



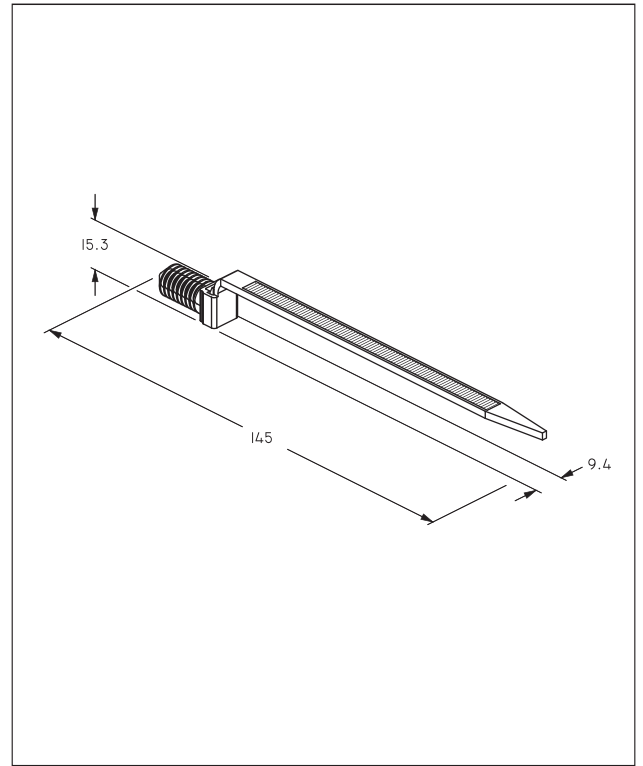
PART FEATURE	DETAILS
Mating Stud Size	M8

## Part Number: E-1435 - Tie Strap Retainer with M8 Stud Attachment



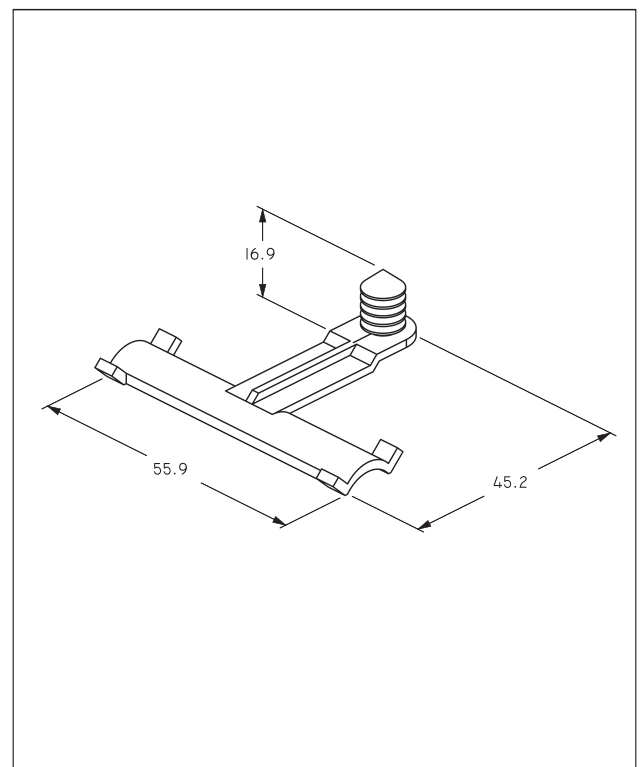
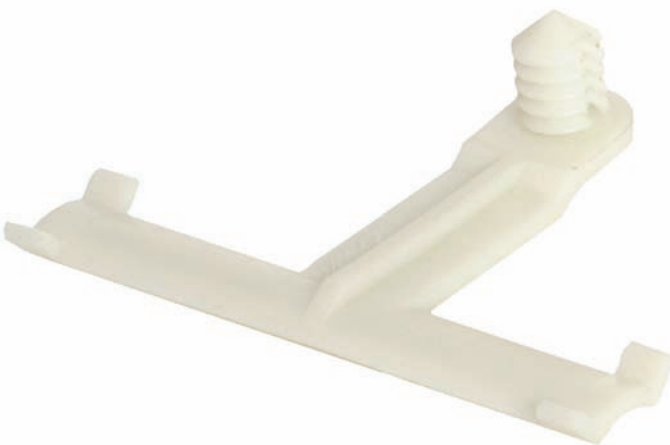
PART FEATURE	DETAILS
Mating Stud Size	M8

## Part Number: E-1481 - Tie Strap Retainer



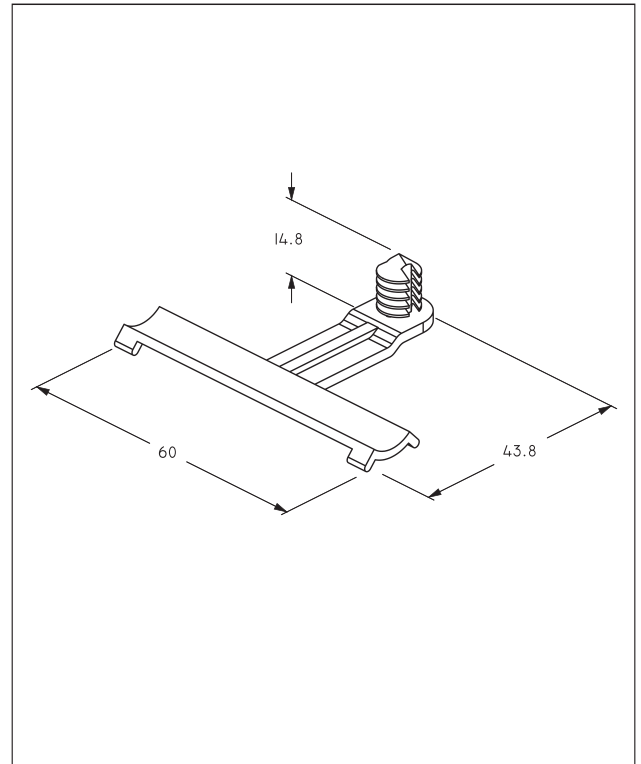
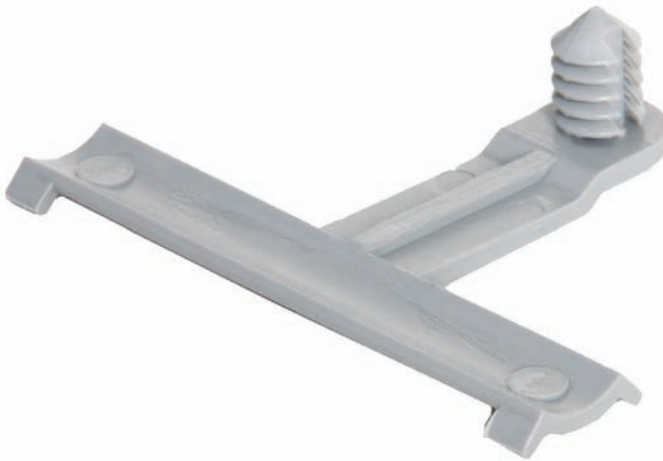
PART FEATURE	DETAILS
Mating Hole Size	7.95mm
Maximum Panel Thickness	11.70mm

## Part Number: E-1578 - Tape-on Retainer



PART FEATURE	DETAILS
Mating Hole Size	6.5mm
Maximum Panel Thickness	5.40mm

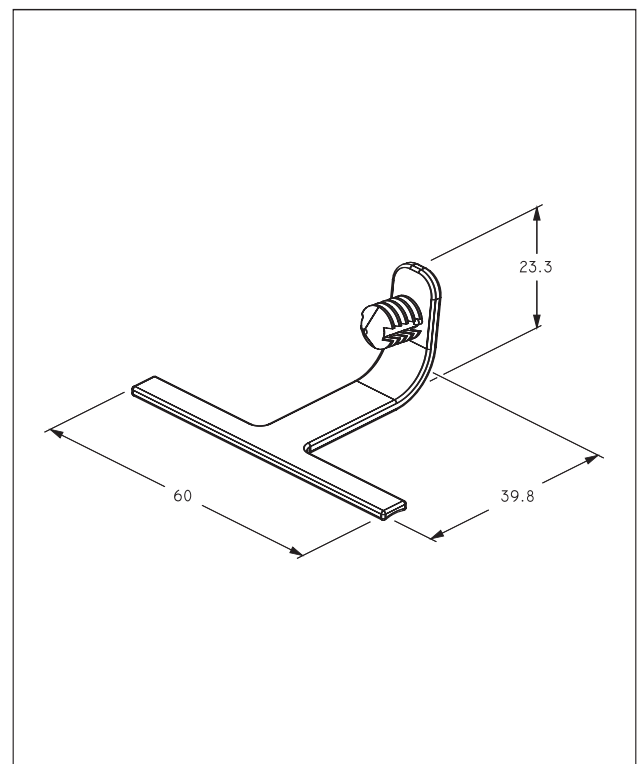
## Part Number: E-1580 - Tape-on Retainer



PART FEATURE	DETAILS
Mating Hole Size	6.5mm
Maximum Panel Thickness	5.10mm

## Part Number: E-1584 - Tape-on Retainer

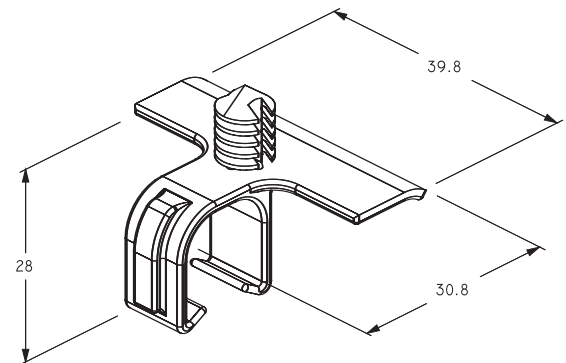
NO  
PHOTO  
AVAILABLE



PART FEATURE	DETAILS
Mating Hole Size	6.5mm
Maximum Panel Thickness	5.10mm

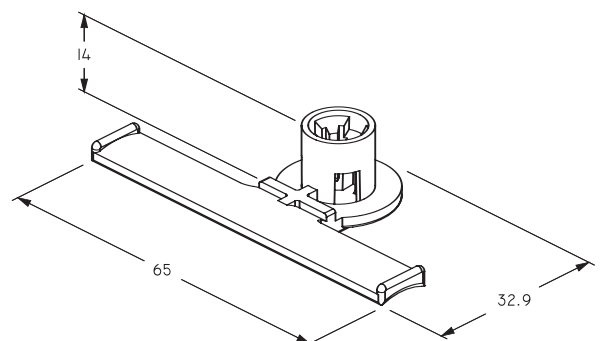


## Part Number: E-2124 - Tape-on Retainer with Harness Clip



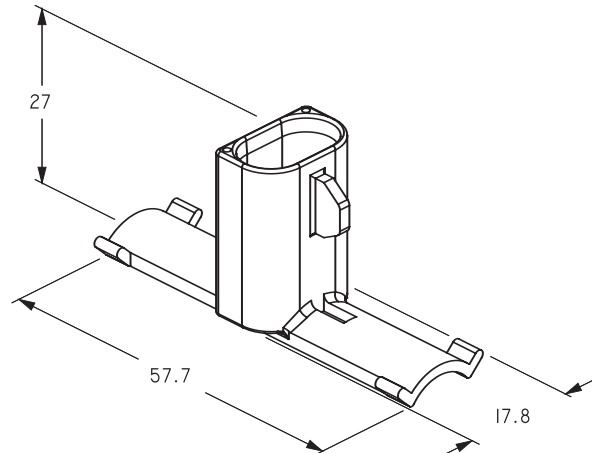
PART FEATURE	DETAILS
Mating Hole Size	6.5mm
Maximum Panel Thickness	5.10mm

## Part Number: E-2153 - Tape-on Retainer with M6 Stud Attachment



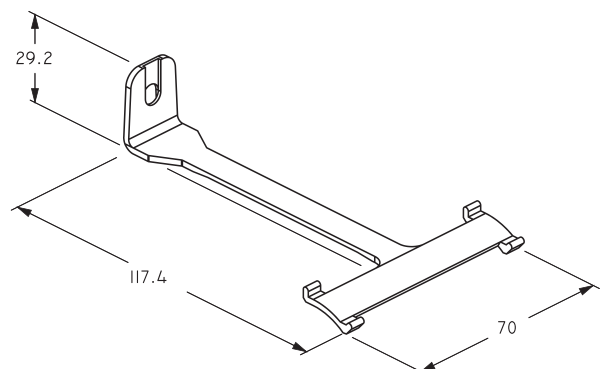
PART FEATURE	DETAILS
Mating Stud Size	M6

## Part Number: E-2250 - Tape-on Retainer



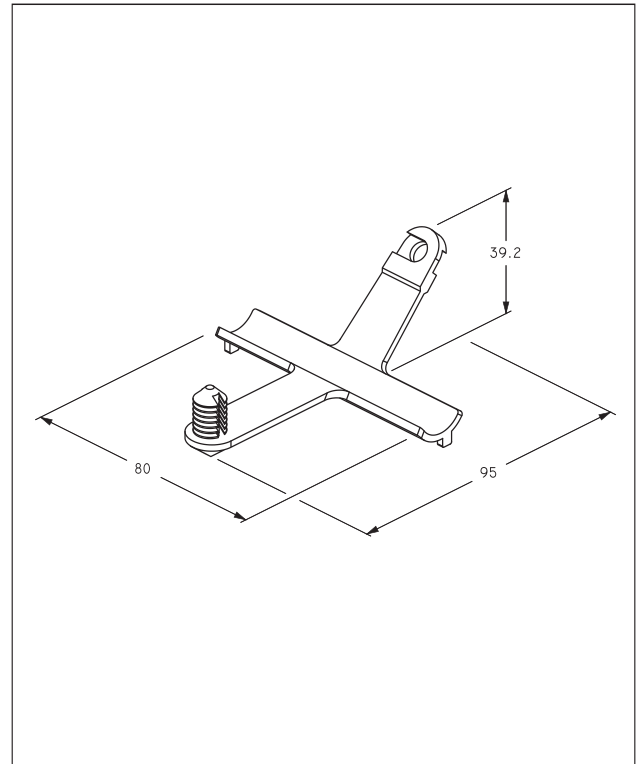
PART FEATURE	DETAILS
-	-

## Part Number: E-3062 - Tape-on Retainer with Portable Hole



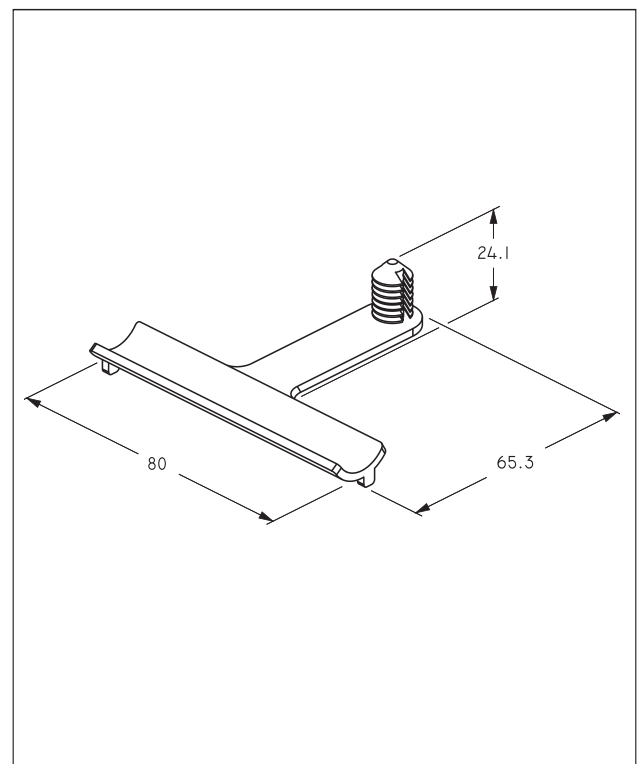
PART FEATURE	DETAILS
Hole Size	6.25mm

## Part Number: E-3085-001 - Tape-on Retainer with Portable Hole



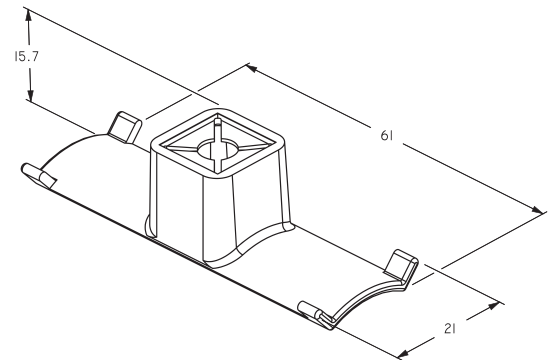
PART FEATURE	DETAILS
Mating Hole Size	7.95mm
Maximum Panel Thickness	11.70mm

## Part Number: E-3085-002 - Tape-on Retainer



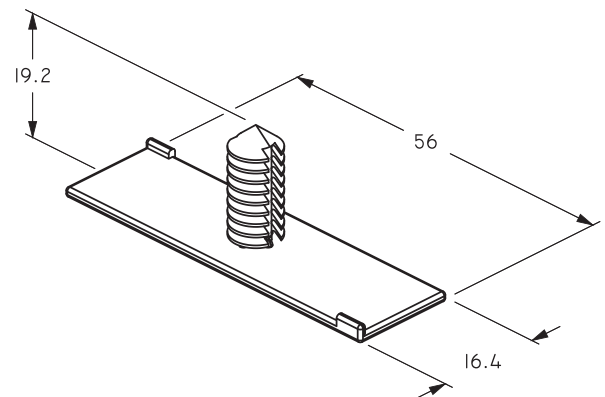
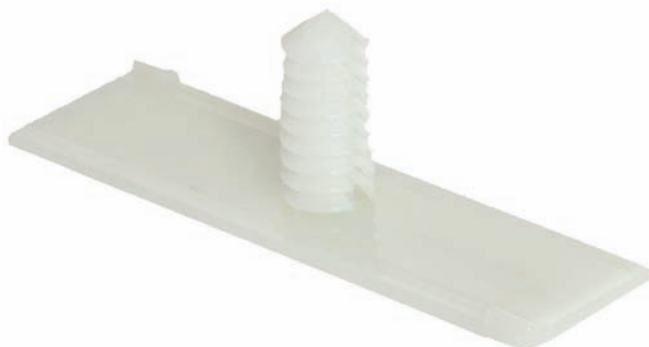
PART FEATURE	DETAILS
Mating Hole Size	7.95mm
Maximum Panel Thickness	11.70mm

## Part Number: E-3714 - Tape-on Retainer for M8 Threaded Stud



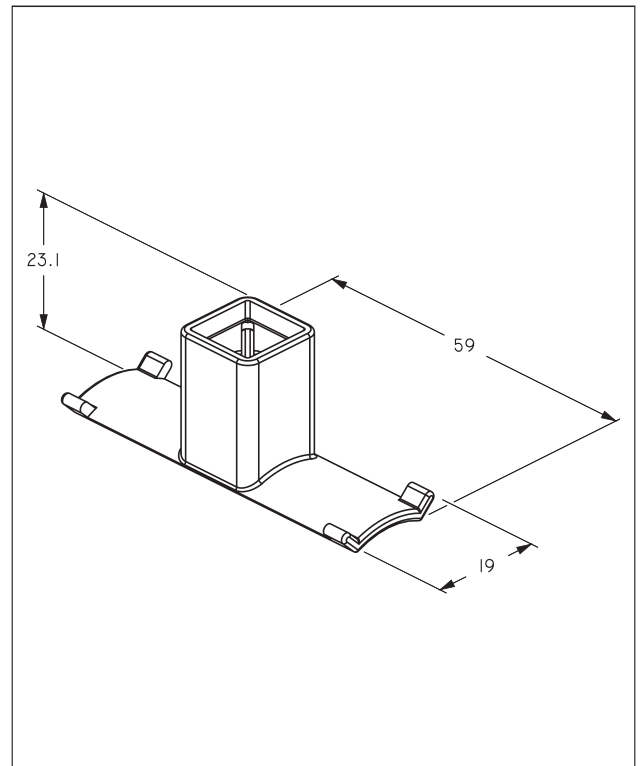
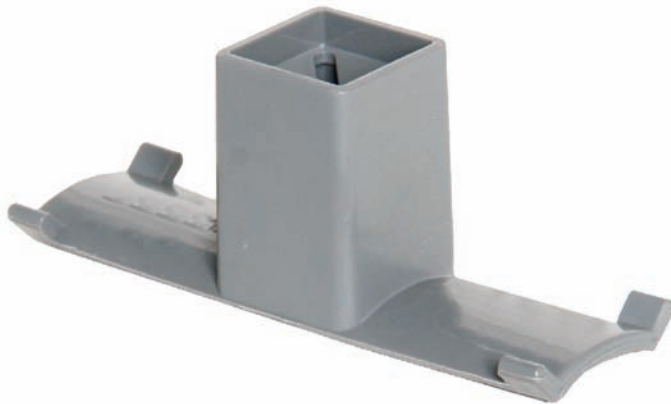
PART FEATURE	DETAILS
Mating Stud Size	M8

## Part Number: E-5245 - Tape-on Retainer



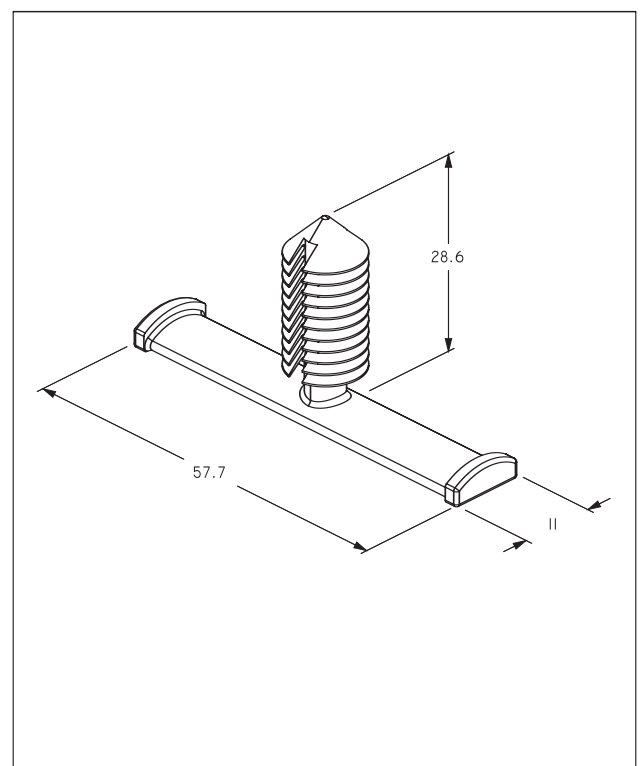
PART FEATURE	DETAILS
Mating Hole Size	6.5mm
Maximum Panel Thickness	12.70mm

## Part Number: E-5734 - Tape-on Retainer for M6 Stud



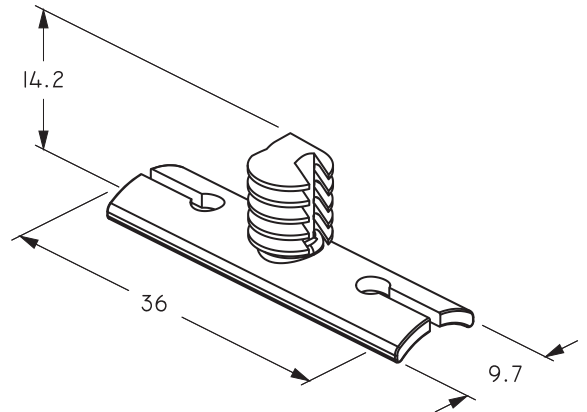
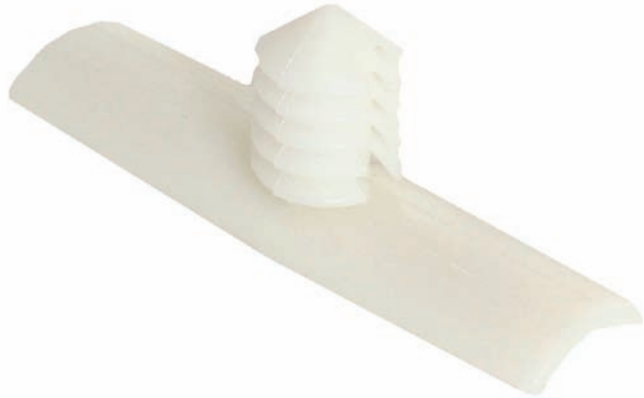
PART FEATURE	DETAILS
Mating Stud Size	M6

## Part Number: E-5956 - Tape-on Retainer



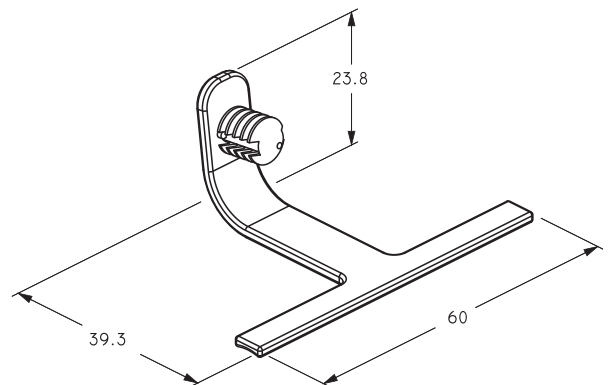
PART FEATURE	DETAILS
Mating Hole Size	9.40mm
Maximum Panel Thickness	11.70mm

## Part Number: E-6078 - Tape-on Retainer



PART FEATURE	DETAILS
Mating Hole Size	6.5mm
Maximum Panel Thickness	5.10mm

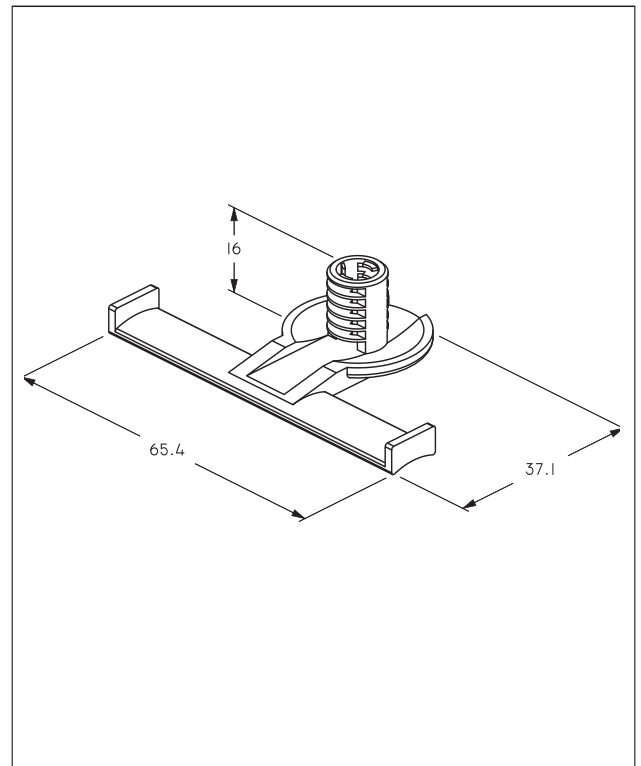
## Part Number: R-60772-001 - Tape-on Retainer with Hook Neck Attachment



PART FEATURE	DETAILS
Mating Hole Size	6.5mm
Maximum Panel Thickness	5.1mm

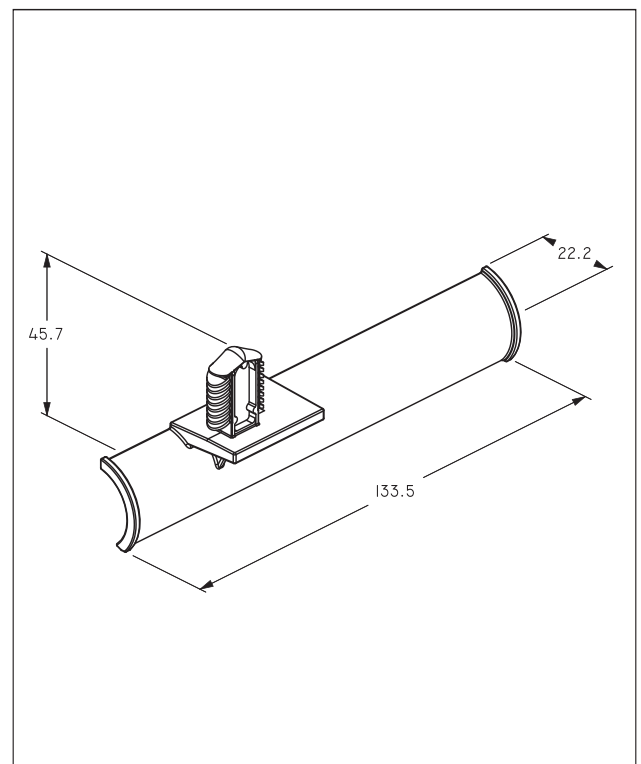
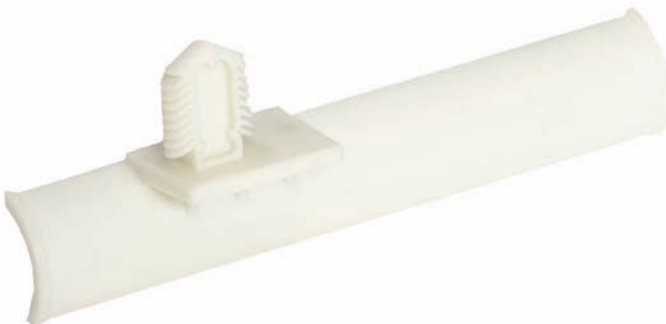


## Part Number: R-62570-001 - Tape-on Retainer with M6 Attachment



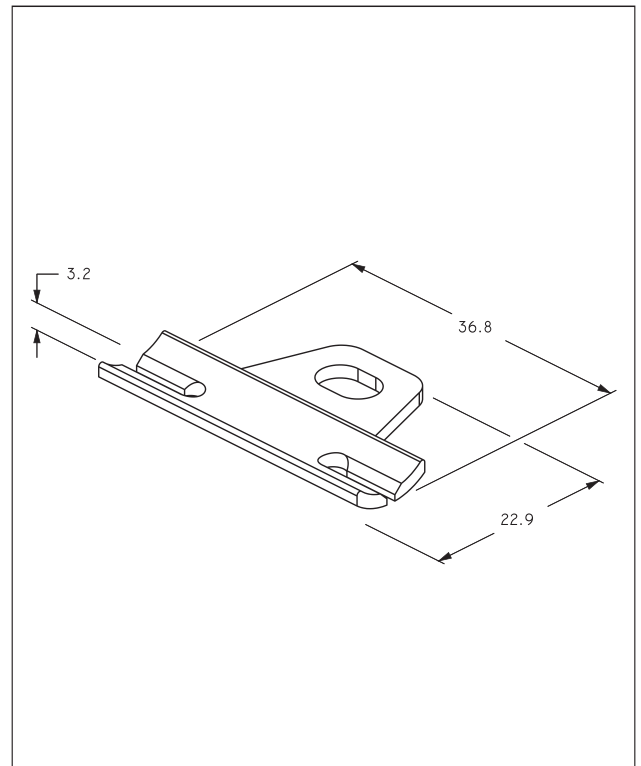
PART FEATURE	DETAILS
Mating Stud Size	M6

## Part Number: R-63204-001 - Tape-on Retainer



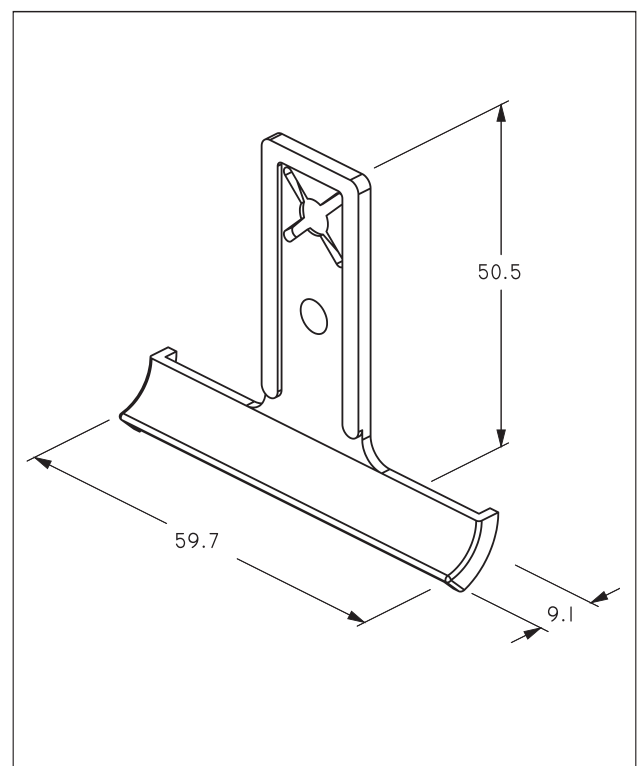
PART FEATURE	DETAILS
Mating Hole Size	16mm x 8mm Slot
Maximum Panel Thickness	9.0mm

## Part Number: R-63341-001 - Tape-on Retainer with Portable Hole



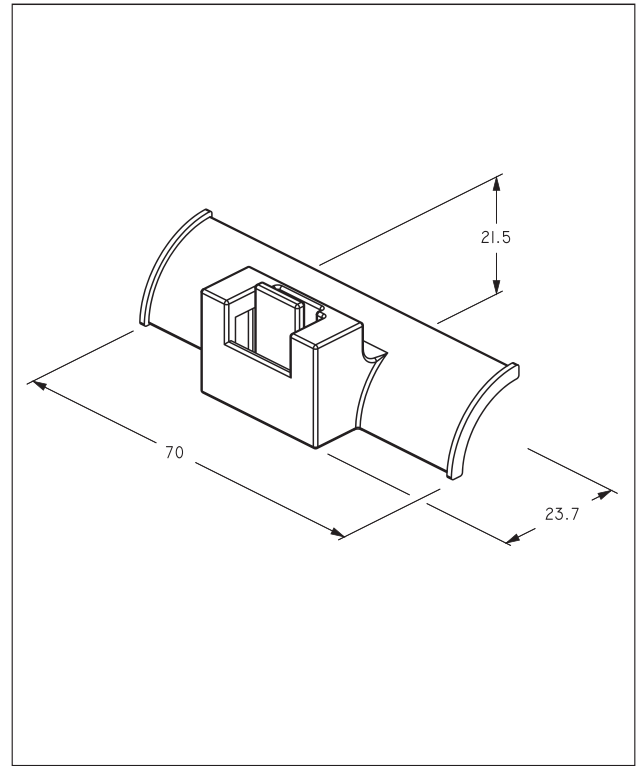
PART FEATURE	DETAILS
Mating Hole Size	7.95mm
Maximum Panel Thickness	9.78mm

## Part Number: R-65337-001 - Tape-on Retainer with M6 Stud Attachment



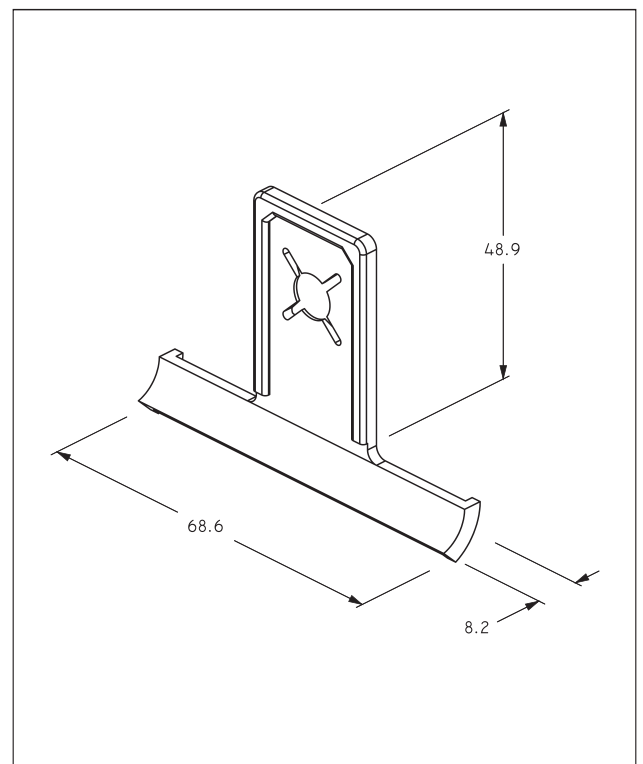
PART FEATURE	DETAILS
Mating Stud Size	M6

## Part Number: R-65338-001 - Tape-on Retainer



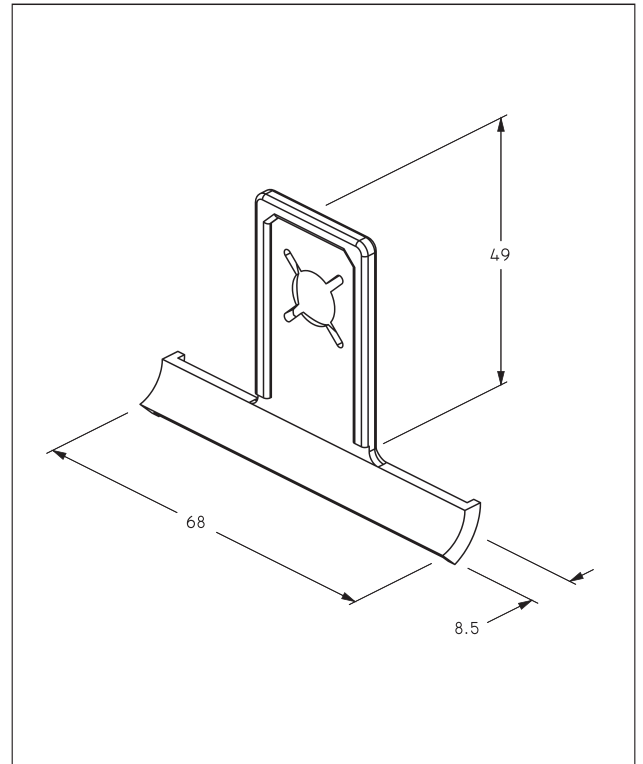
PART FEATURE	DETAILS
-	-

## Part Number: R-65339-001 - Tape-on Retainer



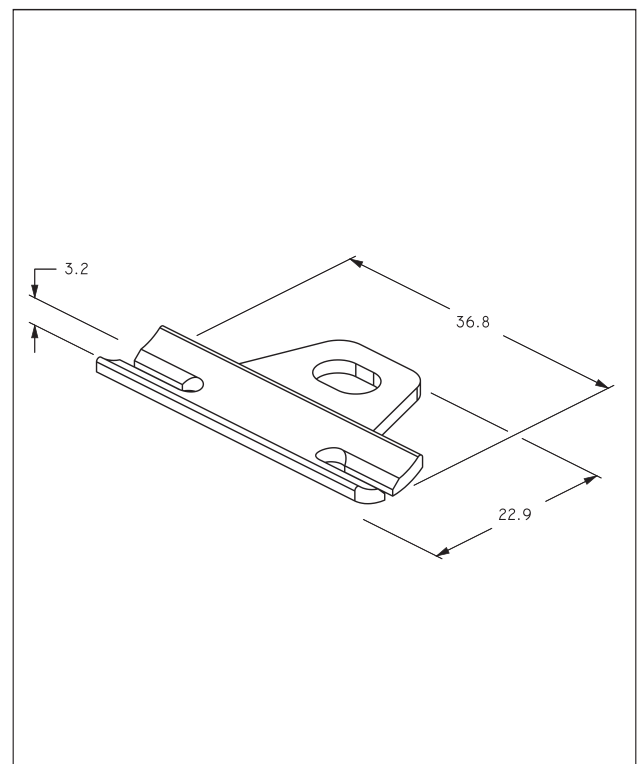
PART FEATURE	DETAILS
Hole Size	8.1mm

## Part Number: R-65340-001 - Tape-on Retainer



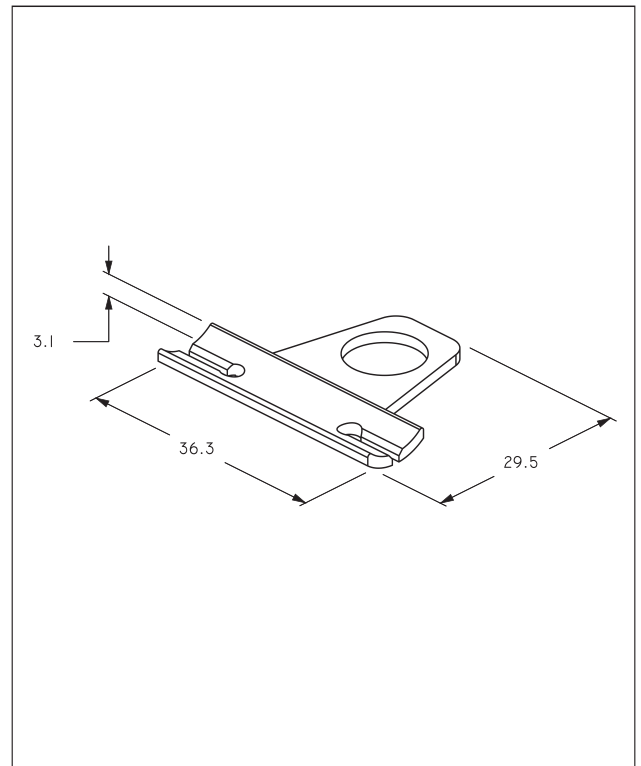
PART FEATURE	DETAILS
Hole Size	9.52mm

## Part Number: R-65341-001 - Tape-on Retainer with Portable Hole



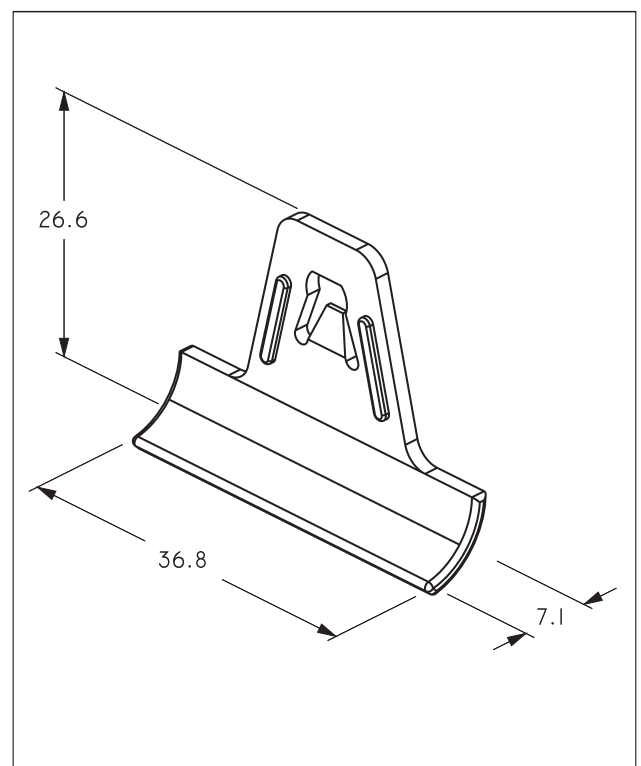
PART FEATURE	DETAILS
Slot Size	7.60mm X 5.0mm

## Part Number: R-65342-001 - Tape-on Retainer with Portable Hole



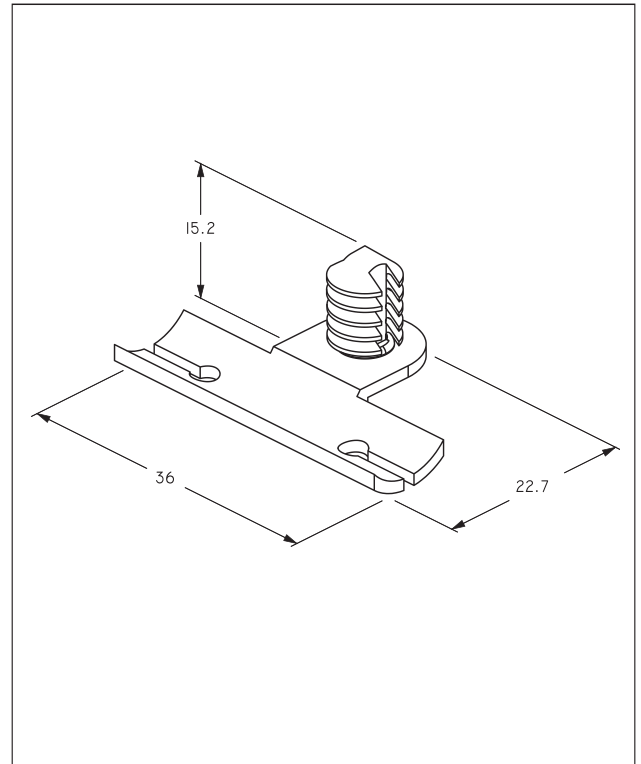
PART FEATURE	DETAILS
Hole Size	10.67mm

## Part Number: R-65343-001 - Tape-on Retainer with Portable Hole



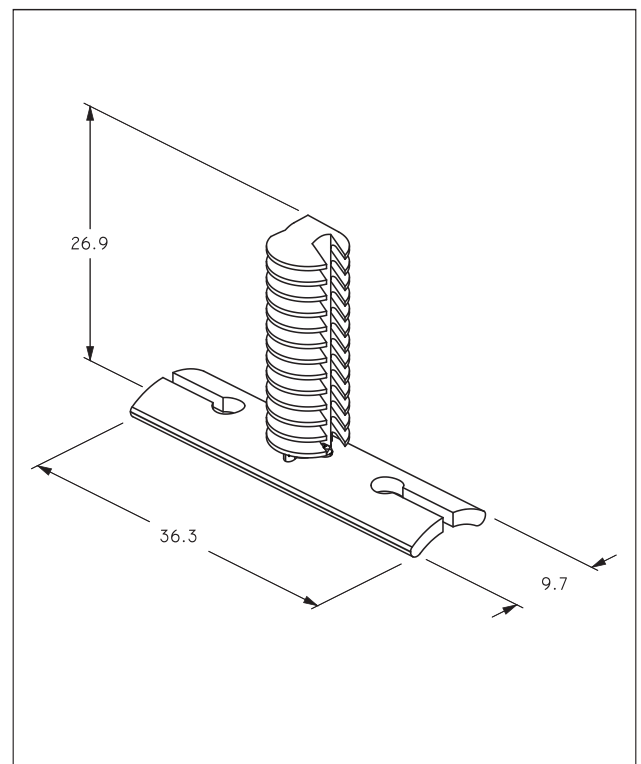
PART FEATURE	DETAILS
Slot Size	5.0mm X 3.5mm

## Part Number: R-65344-001 - Tape-on Retainer



PART FEATURE	DETAILS
Mating Hole Size	6.5mm
Maximum Panel Thickness	5.10mm

## Part Number: R-65345-001 - Tape-on Retainer

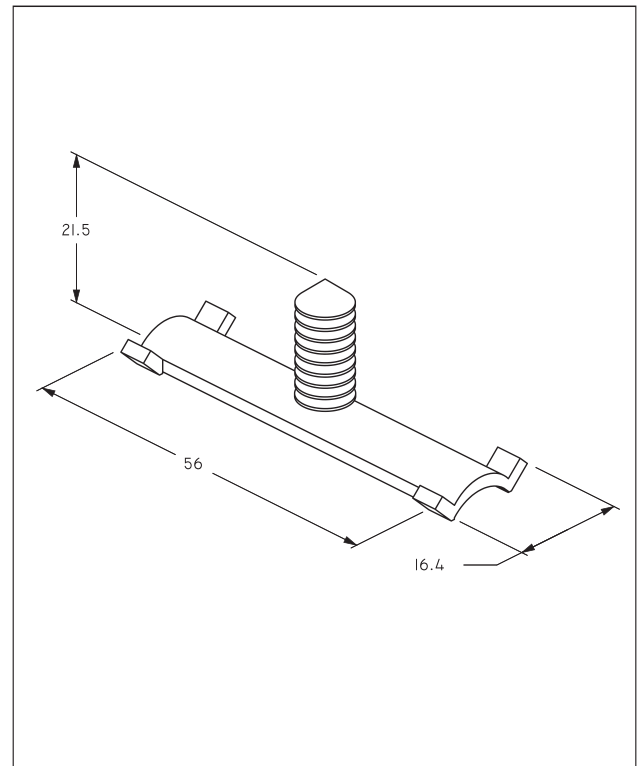


PART FEATURE	DETAILS
Mating Hole Size	6.5mm
Maximum Panel Thickness	19.80mm



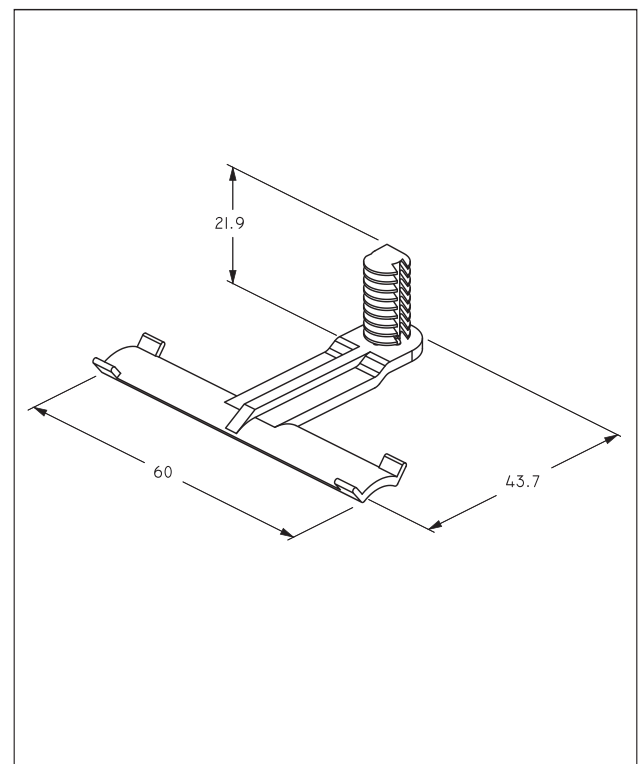
## Part Number: R-65346-001 - Tape-on Retainer

NO  
PHOTO  
AVAILABLE



PART FEATURE	DETAILS
Mating Hole Size	6.5mm
Maximum Panel Thickness	13.0mm

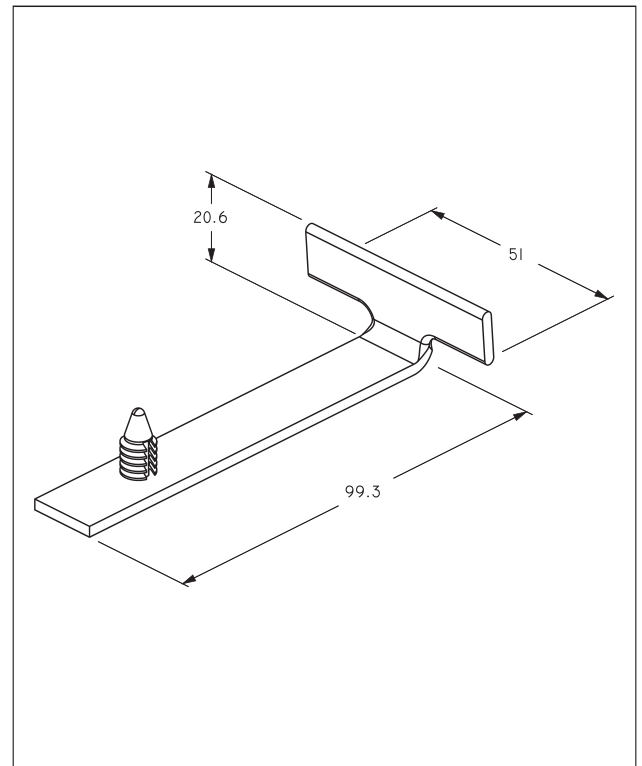
## Part Number: R-65347-001 - Tape-on Retainer



PART FEATURE	DETAILS
Mating Hole Size	6.5mm
Maximum Panel Thickness	5.40mm

## Part Number: R-65348-001 - Tape-on Retainer

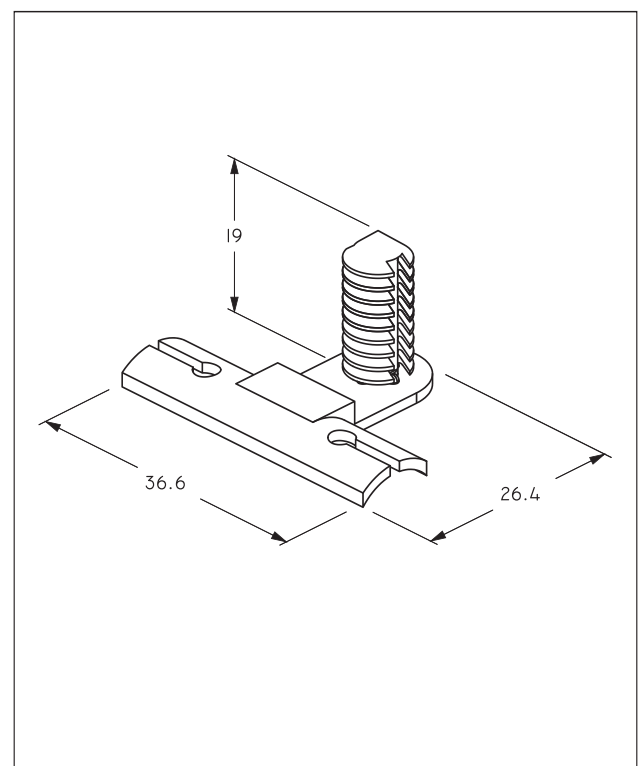
NO  
PHOTO  
AVAILABLE



PART FEATURE	DETAILS
Mating Hole Size	6.5mm
Maximum Panel Thickness	5.10mm

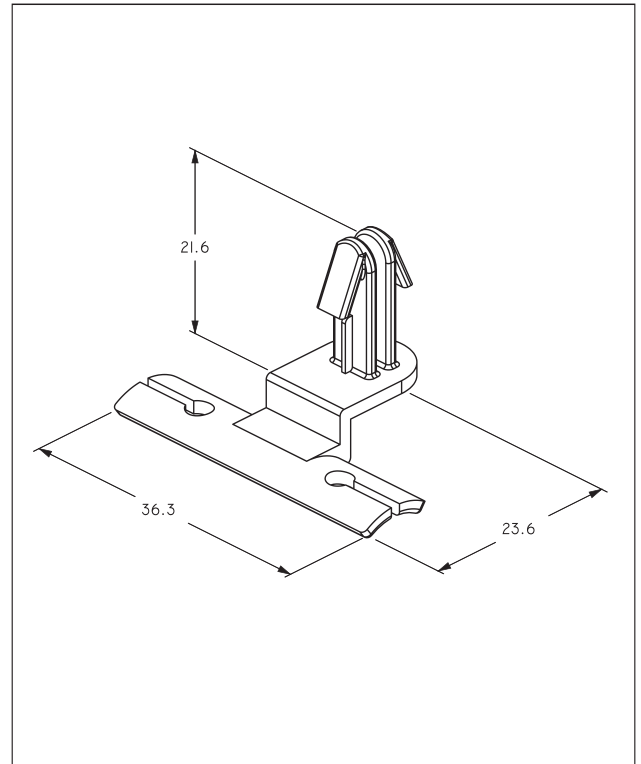
## Part Number: R-65349-001 - Tape-on Retainer

NO  
PHOTO  
AVAILABLE



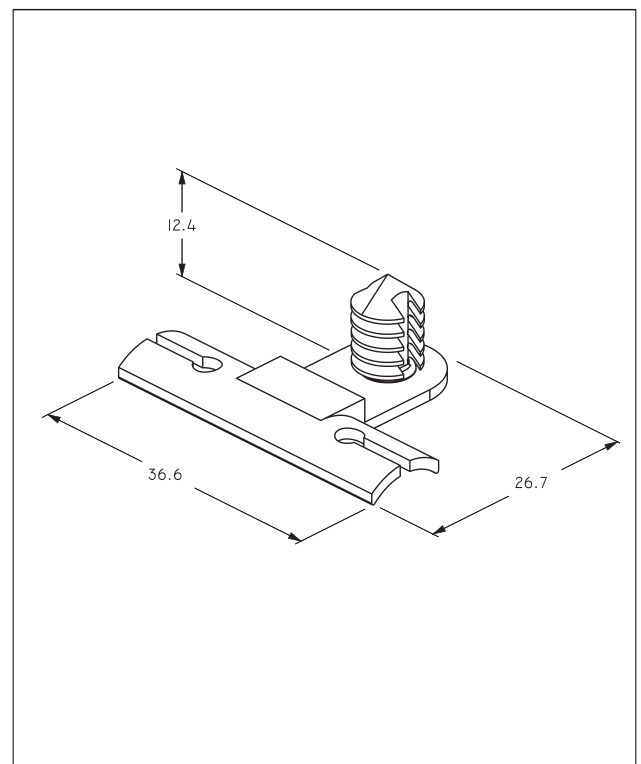
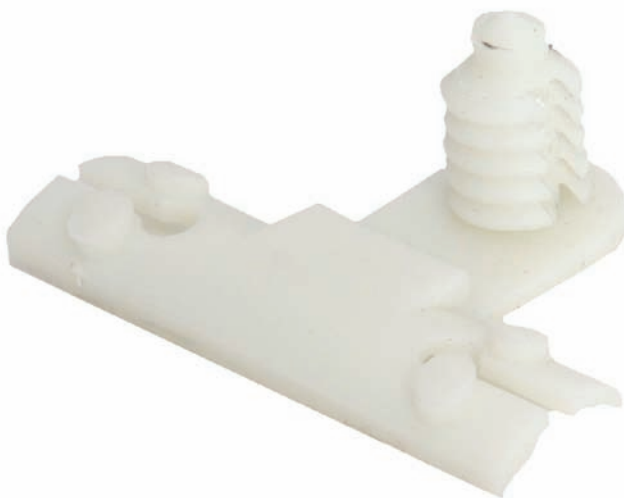
PART FEATURE	DETAILS
Mating Hole Size	6.5mm
Maximum Panel Thickness	3.05mm

## Part Number: R-65350-001 - Tape-on Retainer



PART FEATURE	DETAILS
Mating Hole Size	7.1mm-8.4mm
Maximum Panel Thickness	6.6mm

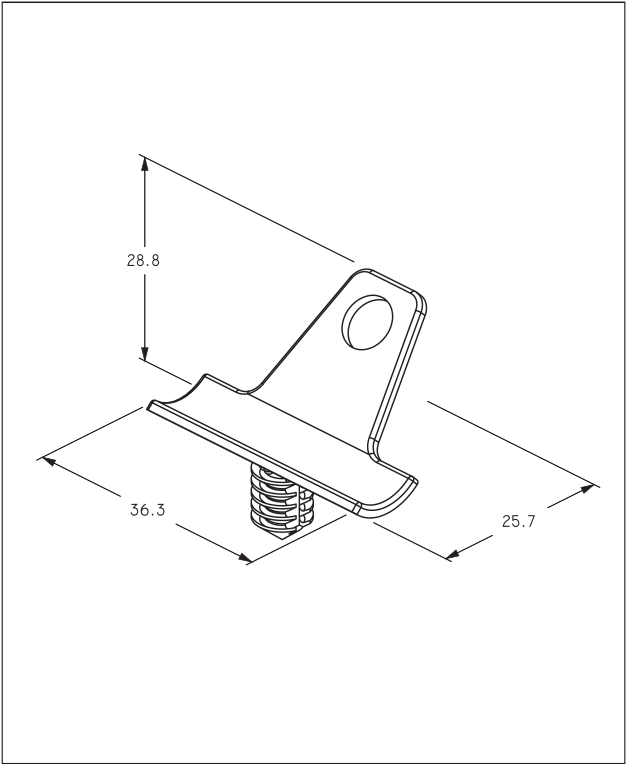
## Part Number: R-65351-001 - Tape-on Retainer



PART FEATURE	DETAILS
Mating Hole Size	6.5mm
Maximum Panel Thickness	6.6mm

Part Number: R-65353-001 - Tape-on Retainer with Portable Hole

NO  
PHOTO  
AVAILABLE

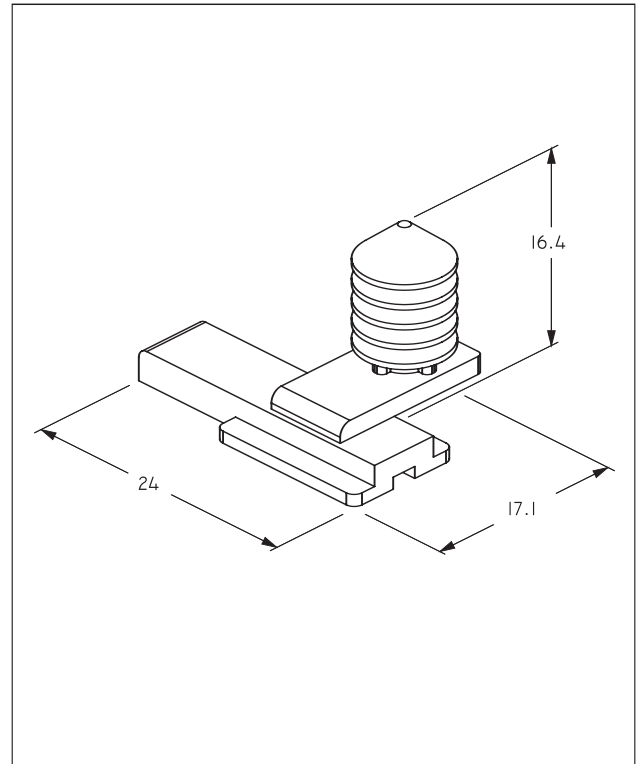


PART FEATURE	DETAILS
Mating Hole Size	6.5mm
Maximum Panel Thickness	5.1mm

# CONNECTORS ROUTING AND RETENTION AID SECTION

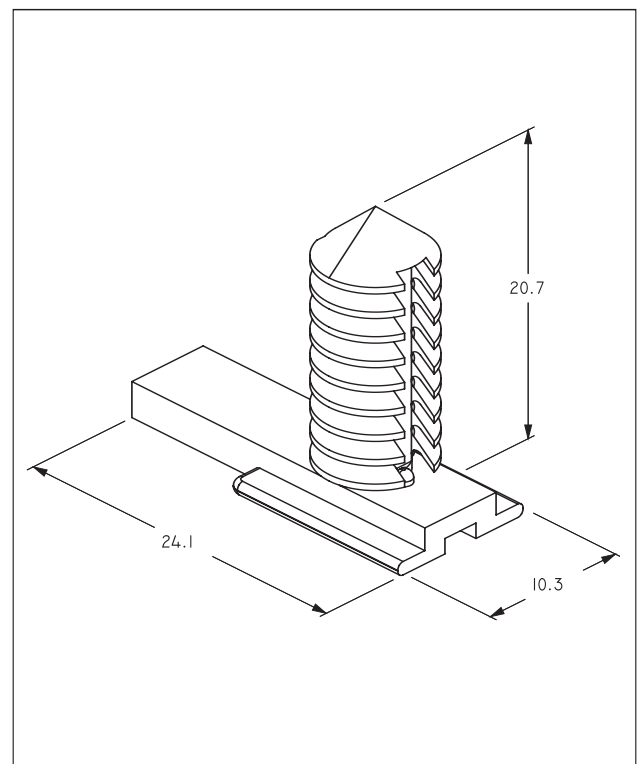


## Part Number: E-0793 - Connector Retainer



PART FEATURE	DETAILS
Mating Hole Size	6.5mm
Maximum Panel Thickness	3.16mm

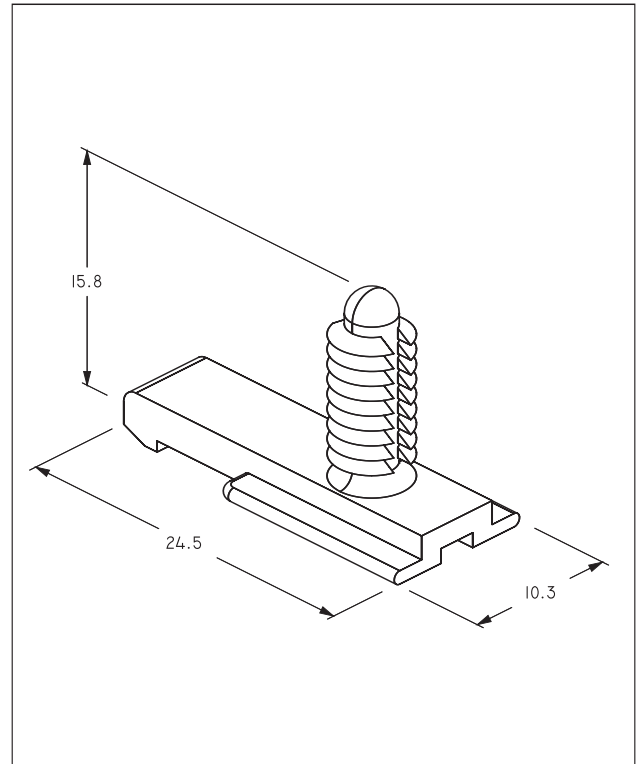
## Part Number: E-0942 - Connector Retainer



PART FEATURE	DETAILS
Mating Hole Size	6.5mm
Maximum Panel Thickness	5.1mm

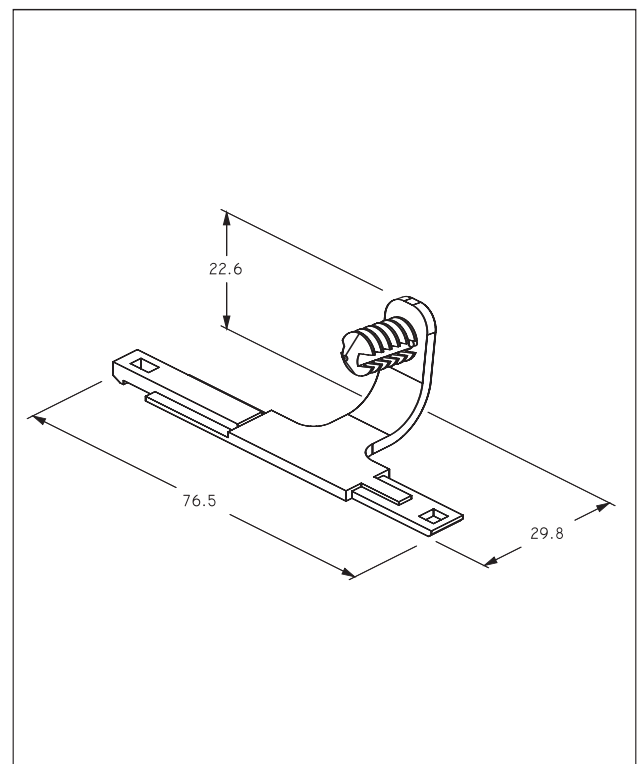


## Part Number: E-1553 - Connector Retainer



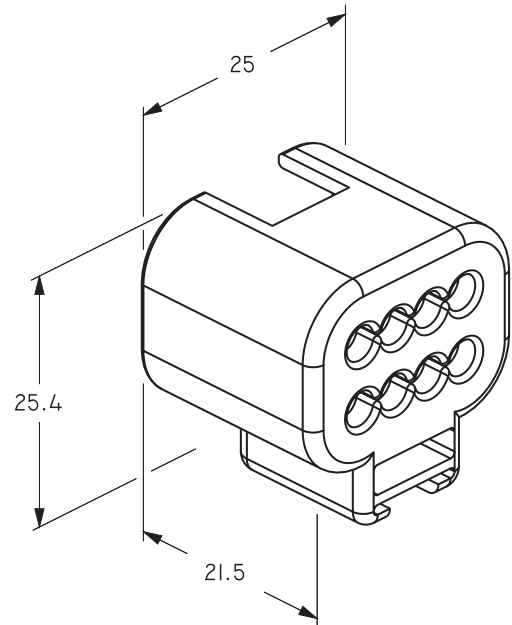
PART FEATURE	DETAILS
Mating Hole Size	5.0mm
Maximum Panel Thickness	5.1mm

## Part Number: E-1581 - Connector Retainer



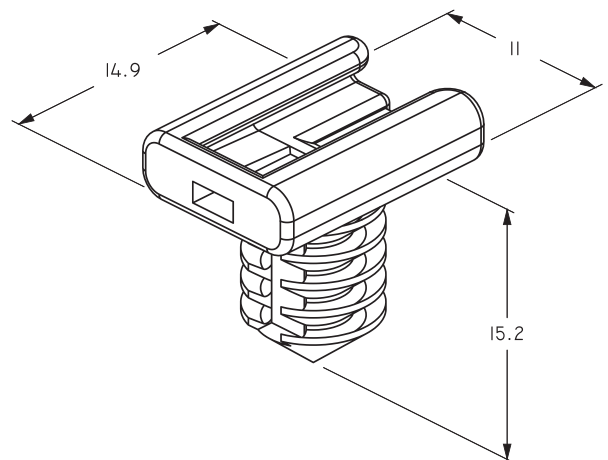
PART FEATURE	DETAILS
Mating Hole Size	6.5mm
Maximum Panel Thickness	5.10mm

## Part Number: E-1979 - Connector Retainer



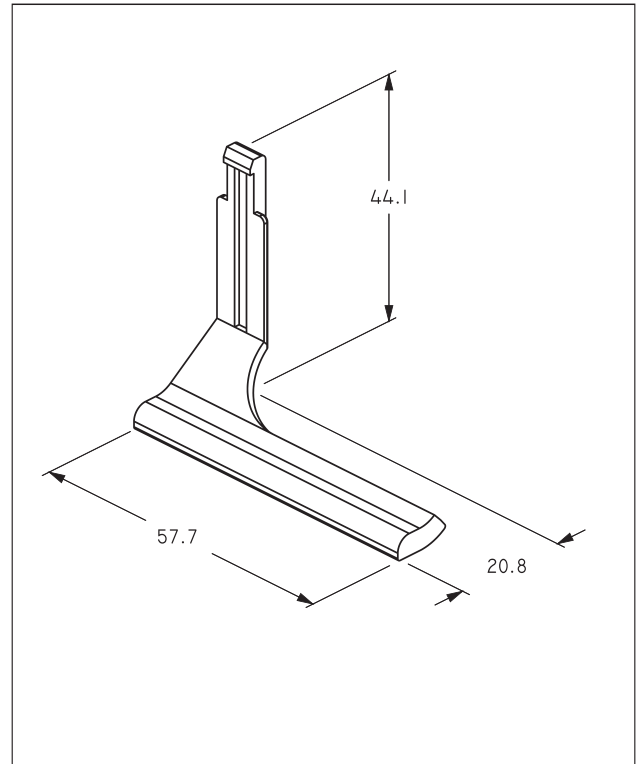
PART FEATURE	DETAILS
Mating Component	E-4520

## Part Number: E-3388 - Connector Retainer



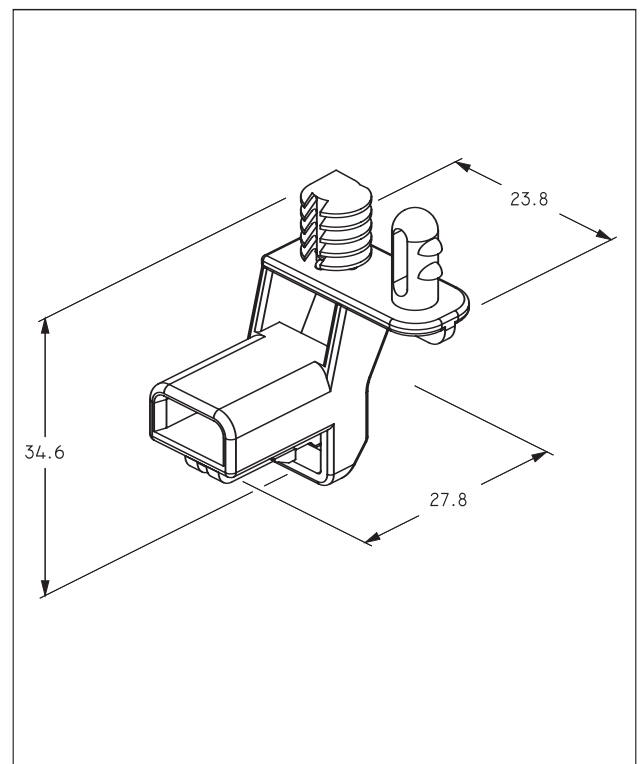
PART FEATURE	DETAILS
Mating Hole Size	6.5mm
Maximum Panel Thickness	5.10mm

## Part Number: E-3527 - Connector Retainer with Harness Tape-on



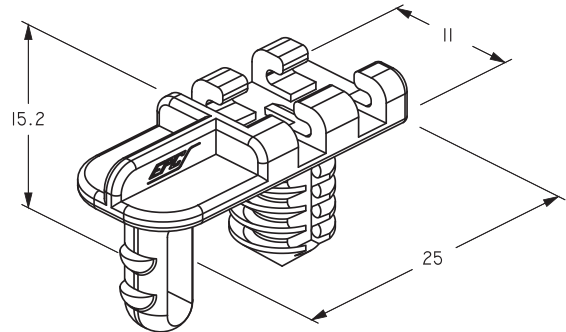
PART FEATURE	DETAILS
-	-

## Part Number: E-3668 - Connector Retainer



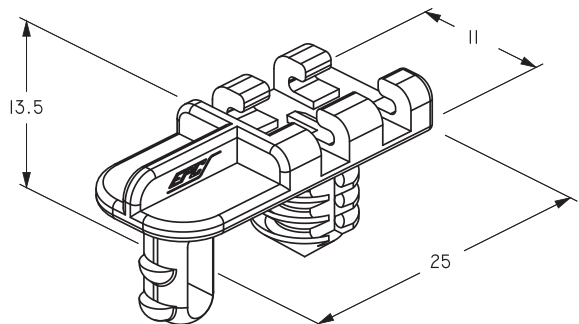
PART FEATURE	DETAILS
Mating Component	E-5908

## Part Number: E-3878-001 - Connector Retainer



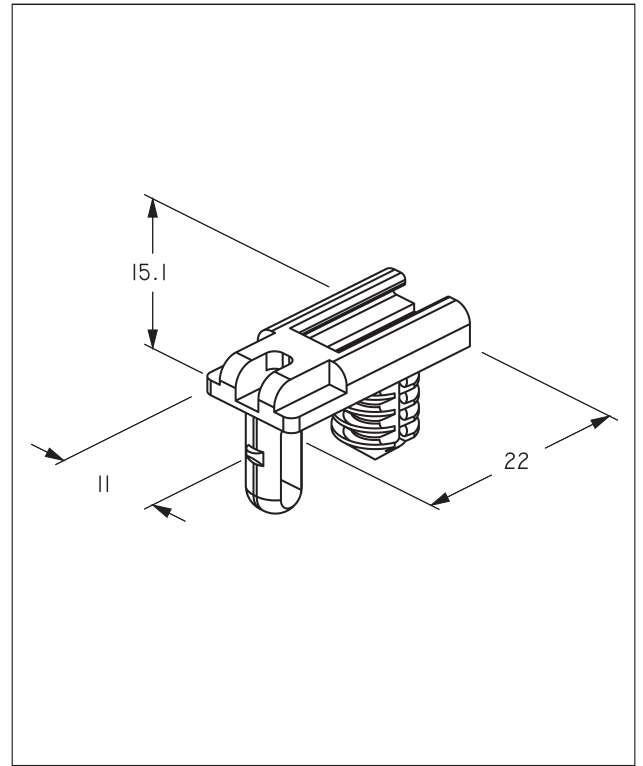
PART FEATURE	DETAILS
Maximum Panel Thickness	5.10mm

## Part Number: E-3878-002 - Connector Retainer



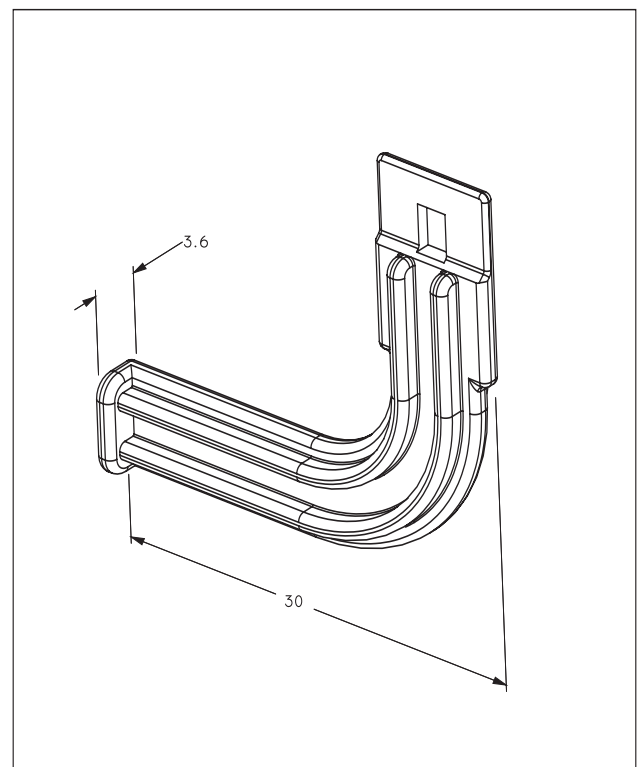
PART FEATURE	DETAILS
Maximum Panel Thickness	3.45mm

## Part Number: E-3886 - Connector Retainer



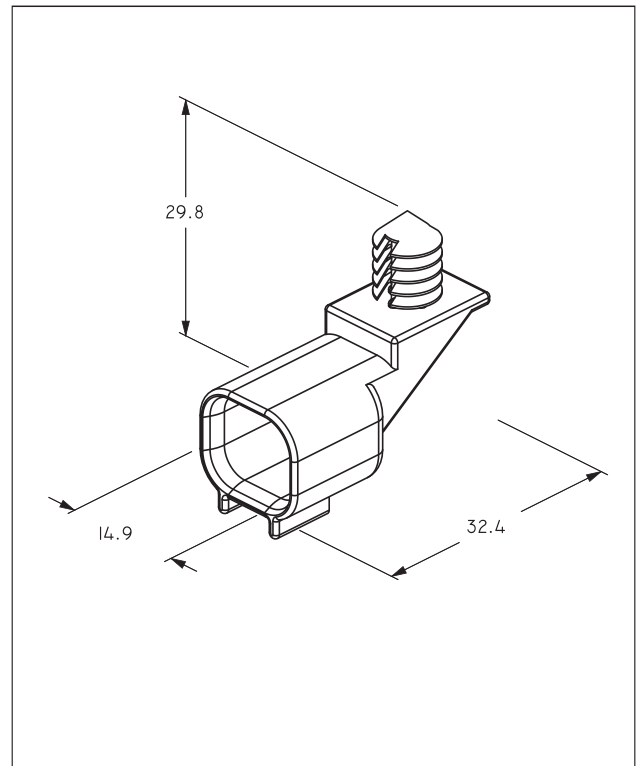
PART FEATURE	DETAILS
Maximum Panel Thickness	5.10mm

## Part Number: E-4530 - Connector Retainer



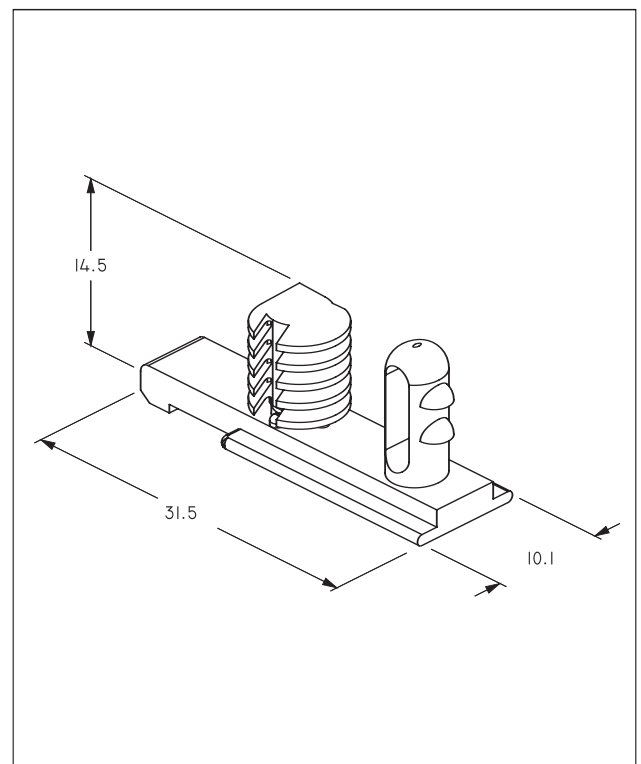
PART FEATURE	DETAILS
Mating Component	E-3979

## Part Number: E-4694 - Connector Retainer



PART FEATURE	DETAILS
Mating Hole Size	6.5mm
Maximum Panel Thickness	5.10mm
Mating Components	E-4014,E-5069,E-5229,E-5701,E-5705

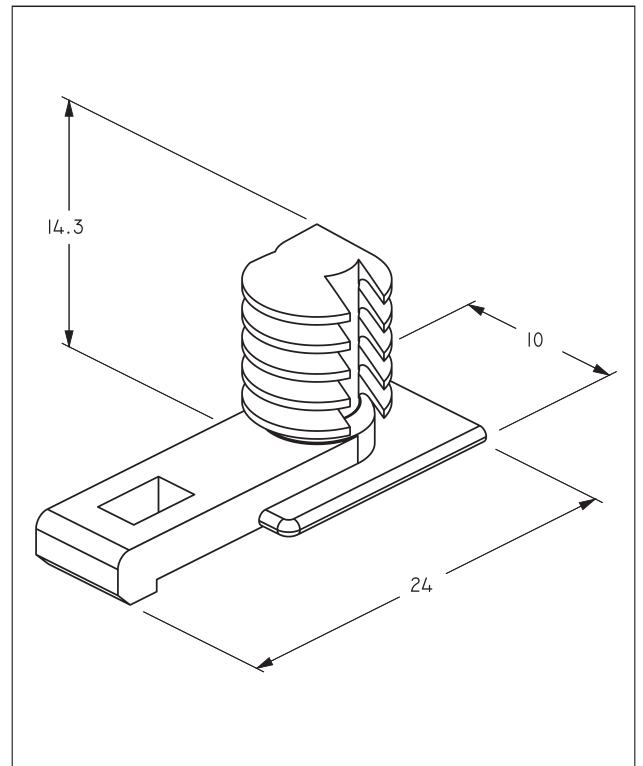
## Part Number: E-5296 - Connector Retainer



PART FEATURE	DETAILS
Maximum Panel Thickness	5.10mm

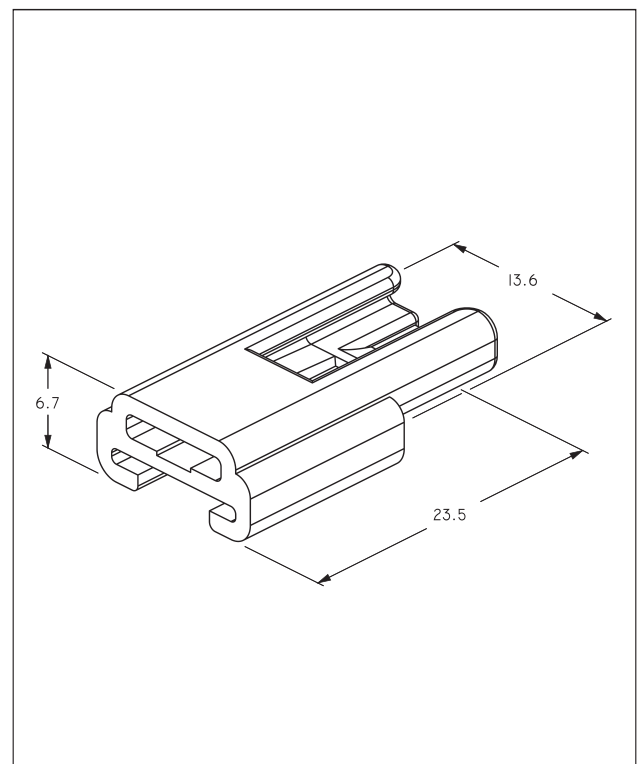


## Part Number: E-5297 - Connector Retainer



PART FEATURE	DETAILS
Mating Hole Size	6.5mm
Maximum Panel Thickness	5.10mm

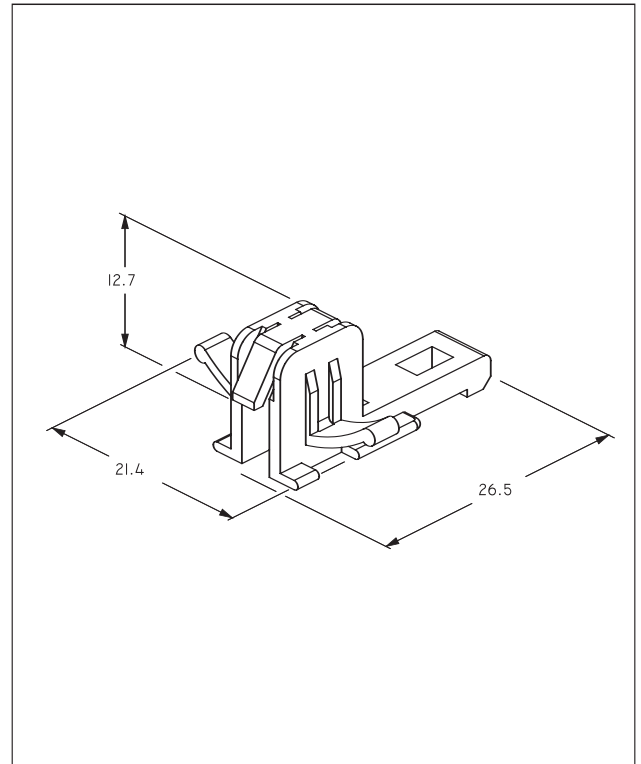
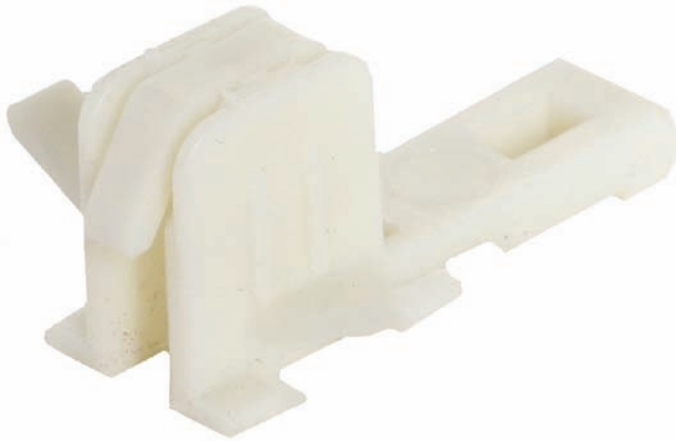
## Part Number: E-5941 - Connector Retainer



PART FEATURE	DETAILS
-	-

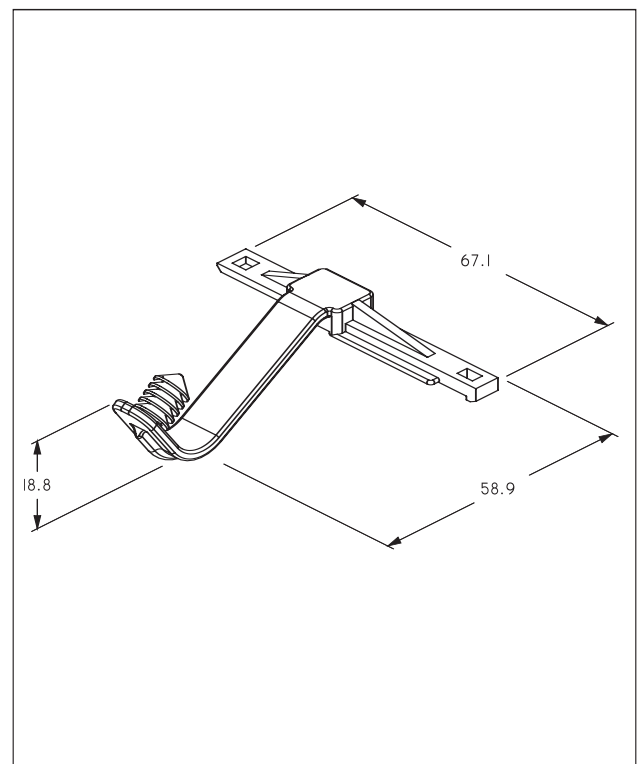


## Part Number: E-6099 - Connector Retainer



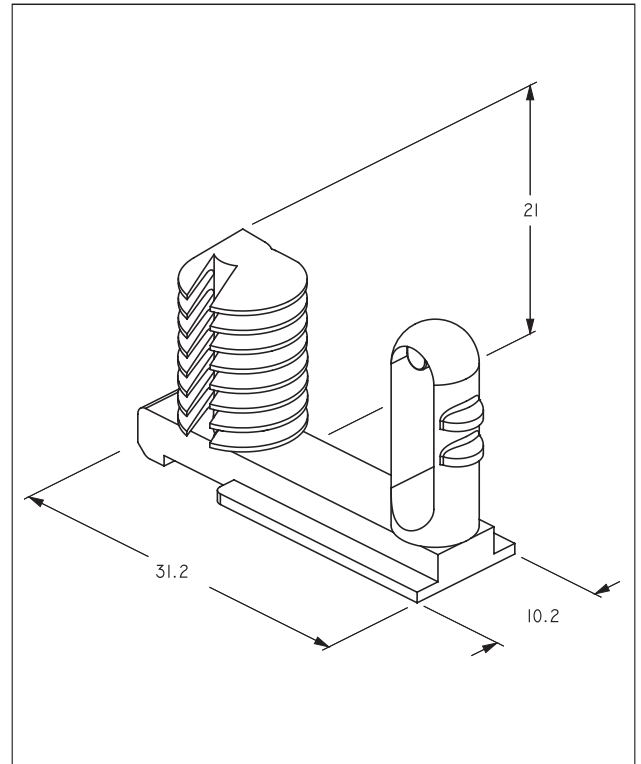
PART FEATURE	DETAILS
-	-

## Part Number: R-60771-001 - Connector Retainer



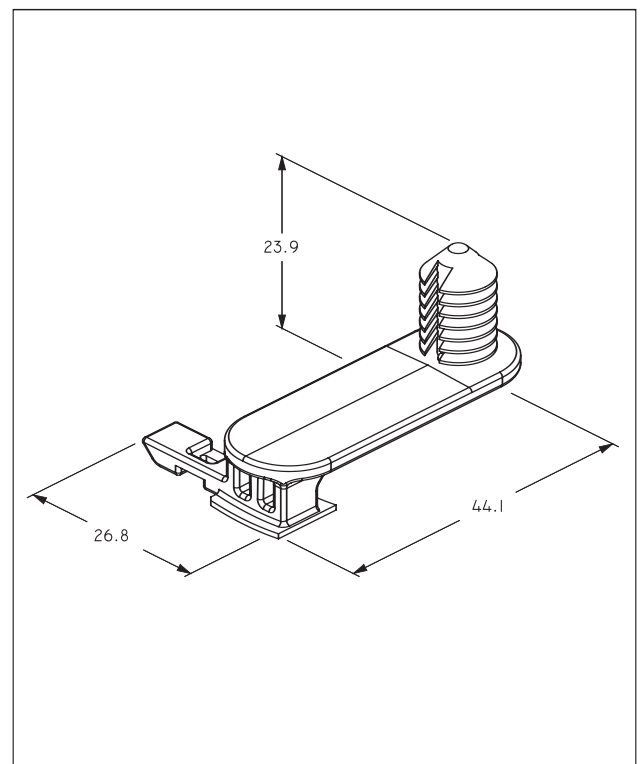
PART FEATURE	DETAILS
Mating Hole Size	6.5mm
Maximum Panel Thickness	5.10mm

## Part Number: R-62503-001 - Connector Retainer



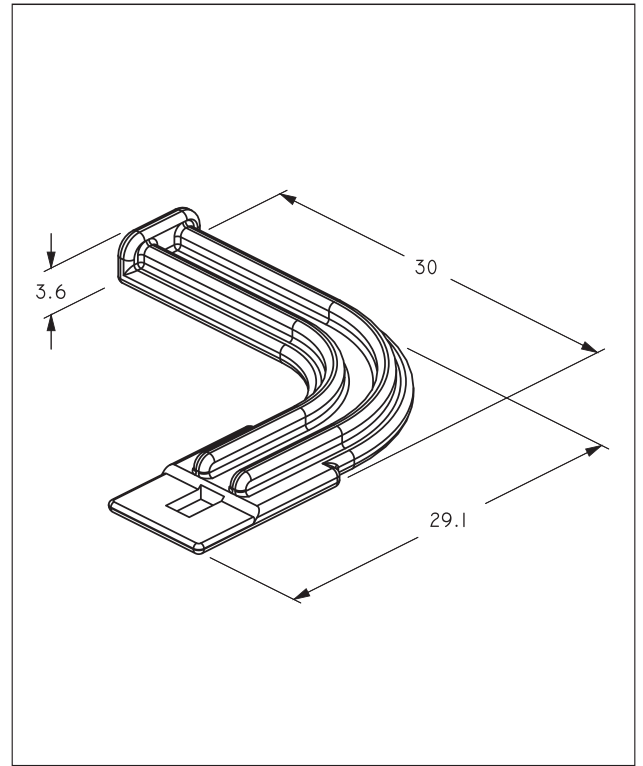
PART FEATURE	DETAILS
Maximum Panel Thickness	5.10mm

## Part Number: R-62913-001 - Connector Retainer



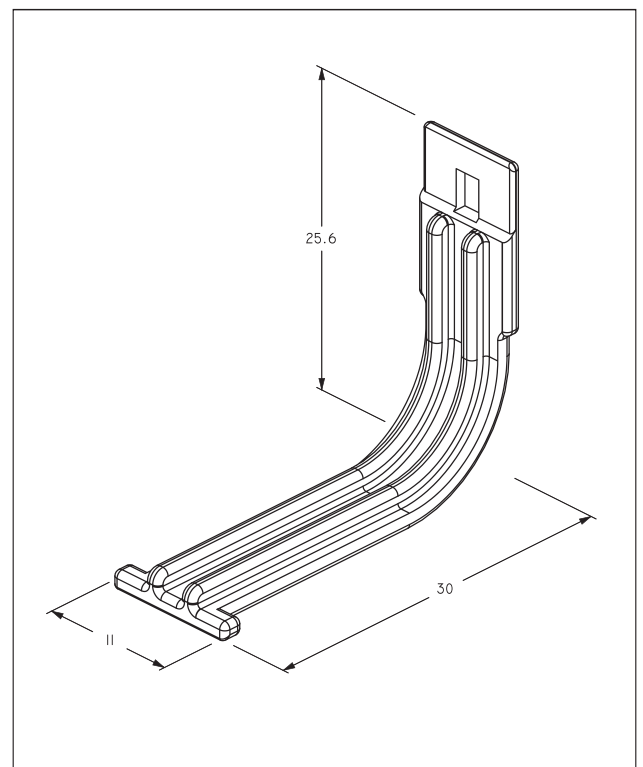
PART FEATURE	DETAILS
Mating Hole Size	9.3mm
Maximum Panel Thickness	5.10mm

## Part Number: R-63650-001 - Connector Retainer with Harness Tape-on



PART FEATURE	DETAILS
Mating Component	E-3979

## Part Number: R-63651-001 - Connector Retainer with Harness Tape-on



PART FEATURE	DETAILS
Mating Component	E-3979

# PKC GROUP



## **North America**

36555 Corporate Drive  
Suite 300  
Farmington Hills, MI 48331  
USA  
Tel. +1 248 489 4700  
[sales@pkcgroup.com](mailto:sales@pkcgroup.com)

## **South America**

Rua Estrada da Graciosa  
803 - Atuba  
82840 - 360 - Curitiba  
Brazil  
Tel. + 55 41 2109 9778  
[sales@pkcgroup.com](mailto:sales@pkcgroup.com)

## **Europe**

Vihikari 10  
FI-90440 Kempele  
Finland  
Tel. +358 20 1752 111  
[sales@pkcgroup.com](mailto:sales@pkcgroup.com)

## **Asia**

Building 13CD  
Suchun Industrial Square  
428 Xinglong Street  
Suzhou Industrial Park,  
215024  
China  
Tel. +86 512 6265 2025  
[sales@pkcgroup.com](mailto:sales@pkcgroup.com)

[www.pkcgroup.com](http://www.pkcgroup.com)